

Advisors' Symposium 2019



Table of Contents

Introduction to OUHSC

College of Pharmacy

Ziegler College of Nursing

Hudson College of Public Health

Physician Associate Program

Graduate College

Graduate College - GPiBS Program

College of Allied Health

College of Dentistry

College of Dentistry - Dental Hygiene Program

College of Medicine - MD Program

MD/PhD Program

OU/Tulsa School of Community Medicine

Introduction to OUHSC



HEALTH SCIENCES CENTER
The UNIVERSITY of OKLAHOMA

go2.ouhsc.edu

The University of Oklahoma Health Sciences Center is one of only a few comprehensive health centers in the nation with seven health professional Colleges.



go2.ouhsc.edu

Introduction to OUHSC

OUHSC

The OUHSC is the cornerstone of the Oklahoma Health Center, nestled among OU Medical, The Children's Hospital, Harold Hamm Oklahoma Diabetes Center, Peggy & Charles Stephenson Cancer Center, OU Physicians, and Oklahoma Medical Research Foundation.

88

Health professions, undergraduate and graduate degrees

3159

Students Enrollment

1238

Full-time Faculty

300

Acre Campus

25

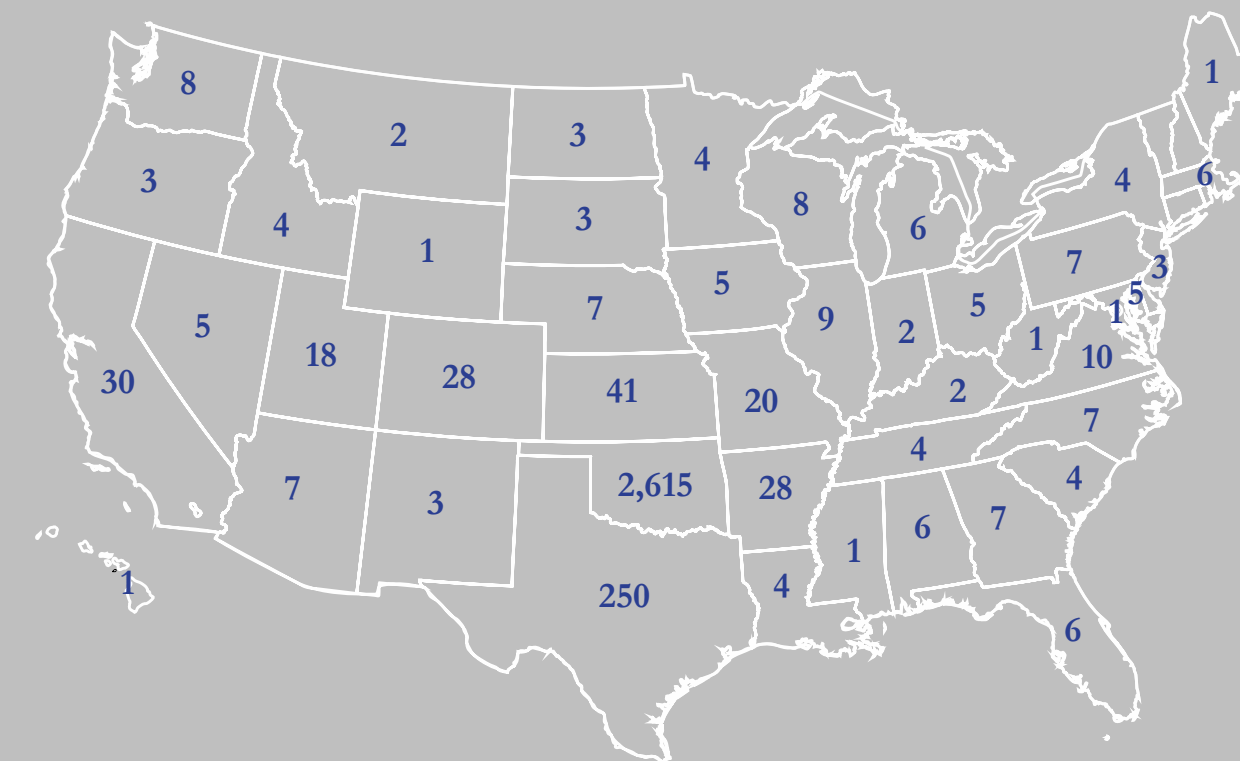
Miles north of Norman, OK



The UNIVERSITY of OKLAHOMA | go2.ouhsc.edu

Demographics

OVERALL ENROLLMENT



OUHSC Total

3159

In-State

2615

Out-of-State

580

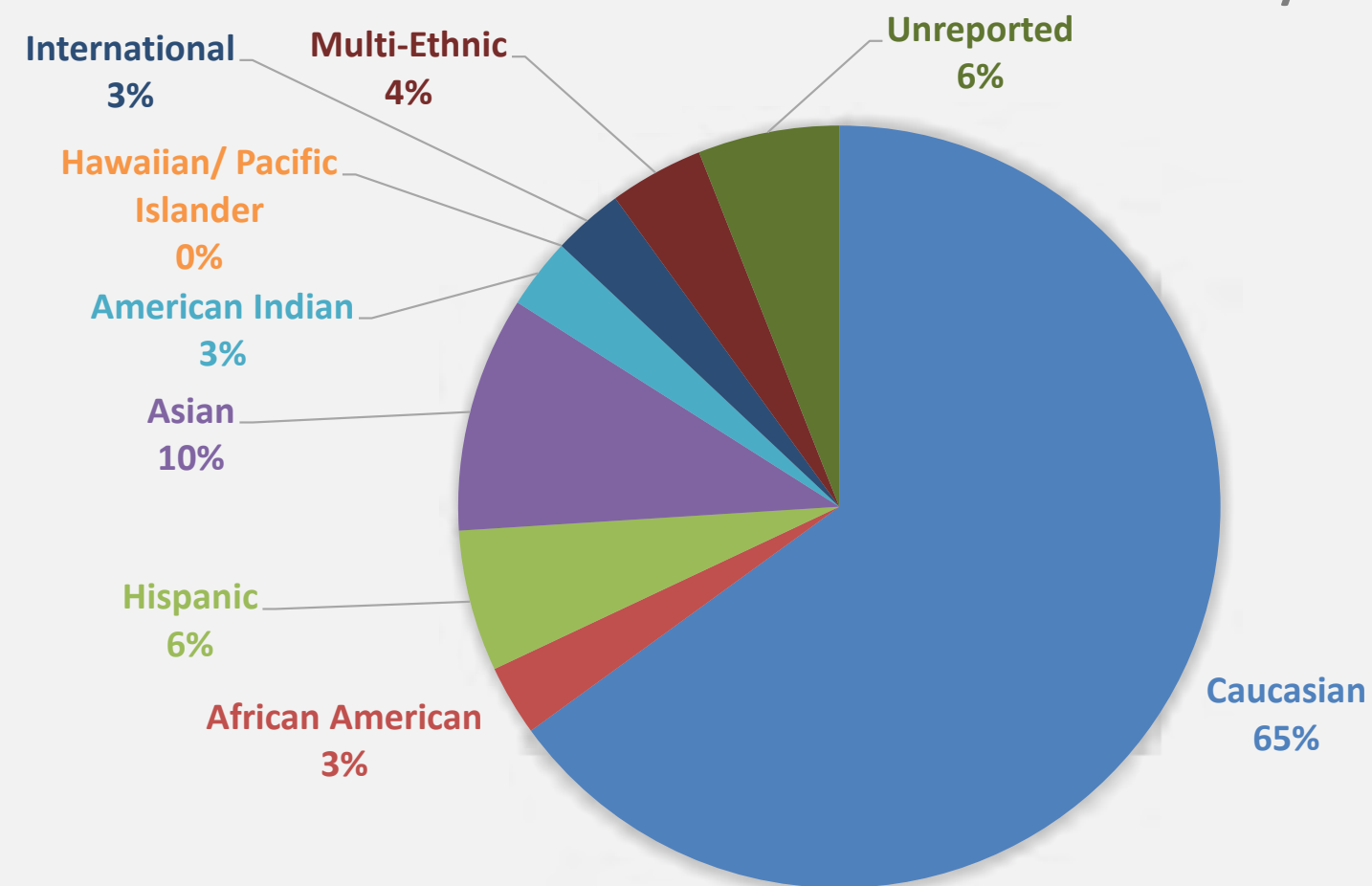


The UNIVERSITY of OKLAHOMA | go2.ouhsc.edu

Introduction to OUHSC

Demographics

ENROLLMENT OF STUDENTS BY ETHNICITY/RACE



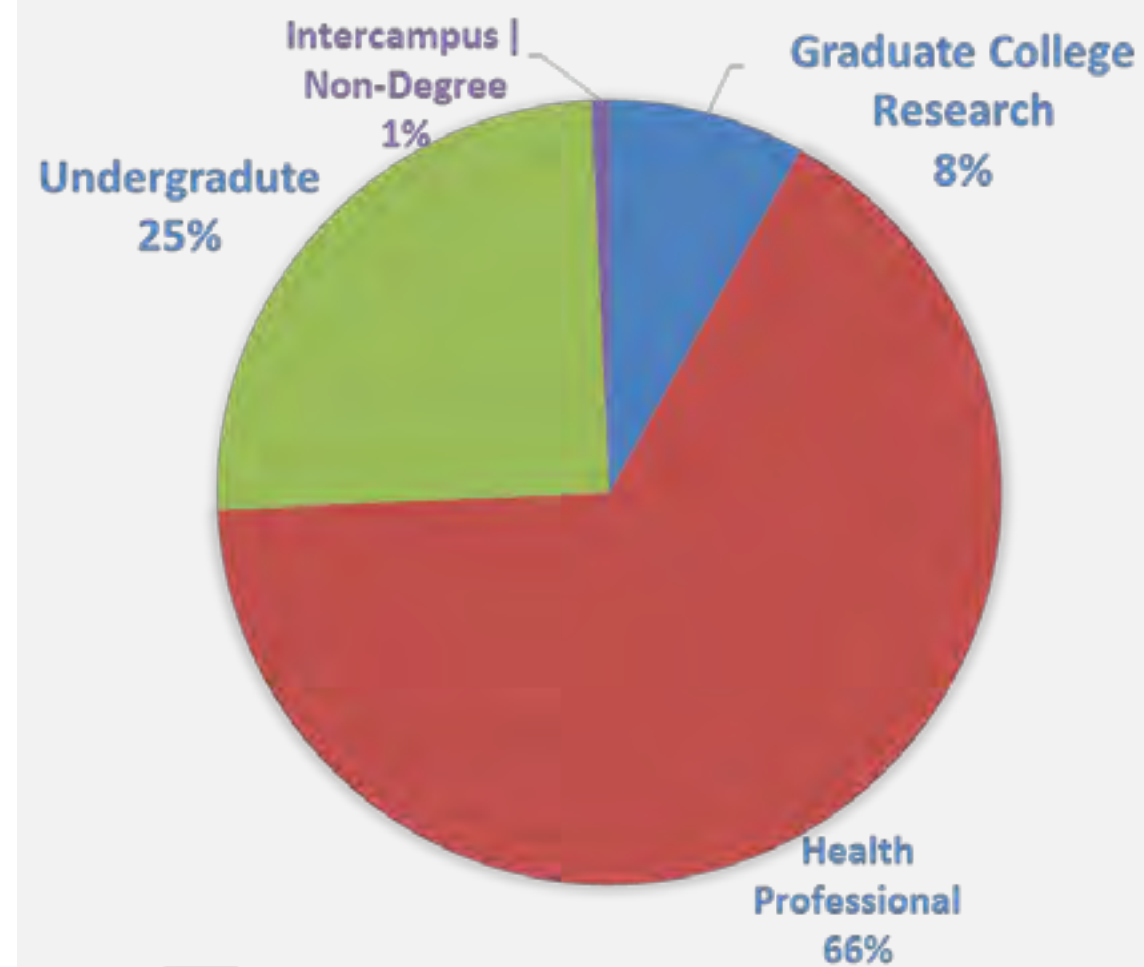
TOTAL INTERNATIONAL COUNTRY OF ORIGIN: 98



The UNIVERSITY of OKLAHOMA | go2.ouhsc.edu

Enrollment

TOTAL BY COLLEGE



Medicine	874
Nursing	649
Allied Health	648
Pharmacy	307
Dentistry	342
Graduate College	287
Public Health	139



The UNIVERSITY of OKLAHOMA | go2.ouhsc.edu

Introduction to OUHSC

Enrollment

UNDERGRADUATE PROGRAMS

College of Allied Health

Nutritional Sciences
Communication Sciences & Disorders
Nuclear Medicine
Radiography
Sonography

College of Dentistry

Dental Hygiene

Fran & Earl Zeigler

College of Nursing

Bachelor's of Science in Nursing

Hudson College

of Public Health

Bachelor's of Science in Public Health

Nursing 481

Allied Health 188

Dentistry 92

Public Health

- Coming Soon



The UNIVERSITY of OKLAHOMA | go2.ouhsc.edu

Parallel Planning

What should my **major** be?

Lets talk you...

- What am I passionate about?
- When do I feel my best?
- What are you good at? Do you see trends?
- When are you proud of yourself?
- Tell me about your values and interests?

Lets talk you 2.0...

- The strength of your academic record?
- Looking at sciences courses, how do you feel?
- How competitive are the programs?



The UNIVERSITY of OKLAHOMA | go2.ouhsc.edu

Introduction to OUHSC

OUHSC Degrees DEGREE SHEETS



www.ouhsc.edu

Future Students

Degrees Offered

(students.ouhsc.edu/ProspectiveStudents/DegreesOffered.aspx)



The UNIVERSITY of OKLAHOMA | go2.ouhsc.edu

University Village



RENT

Studio Apartments | \$642
Townhouse | \$995 (\$497 Half)

Rent includes water, trash and sewer service, security alarm, and high-speed internet.

AMENITIES

Gated Community, Laundry Facilities, Security System and Internet Connection in each room



The UNIVERSITY of OKLAHOMA | go2.ouhsc.edu


Introduction to OUHSC



HEALTH SCIENCES CENTER
The UNIVERSITY of OKLAHOMA

 go2.ouhsc.edu

 students@ouhsc.edu

 (405) 271-2416

[hscstudent](#) 

[@hscstudent](#) 

OU Health Sciences Center 

Contact Us



HSC Student Affairs | 1106 Stonewall Avenue, Suite 300
Oklahoma City, Oklahoma 73117
Phone: 405.271.2416 | Toll-Free: 1.877.577.5655
students@ouhsc.edu

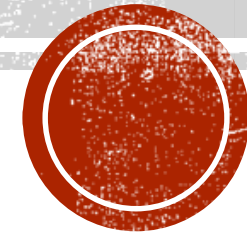


The UNIVERSITY of OKLAHOMA | go2.ouhsc.edu

College of Pharmacy

**THE UNIVERSITY OF
OKLAHOMA COLLEGE OF
PHARMACY**

Katie Perry | Coordinator, Recruitment & Admissions



 **2019-20 UPDATES**



College of Pharmacy

2019 ADMISSION STATISTICS

- Average Pre-requisite GPA: 3.57
- Average Overall GPA: 3.41
- Average Science GPA: 3.22
- Average PCAT Composite: 63rd %tile
- Average Hours Earned: 117
- Completed Bachelors Degree or Above: 39%
- Gender: 67% Female 33% Male
- Minorities: 53%
- Oklahoma Residents: 84%
- Average Age: 23
- Class Size: 64

WHAT'S NEW FOR ADMISSIONS

- Pre-requisite courses must be successfully completed by August 5.
- Pre-requisite coursework may be satisfied if taken outside of the U.S. as long as the applicant provides a World Education Services course-by-course evaluation. Acceptance of foreign coursework to satisfy pre-requisites is at the discretion of the college.
- PCAT has officially added February dates to the exam schedule. We expect an April PCAT date as well.
- Early decision applicants may take the September PCAT exam dates but must email the unofficial score report to Jennifer-Richardson@ouhsc.edu no later than September 13th.
- Website has updated curriculum plans for each college.



College of Pharmacy

WHAT'S NEW FOR ADMISSIONS

- Applicants must take either the [Pharmacy College Admission Test \(PCAT\)](#) or the [Graduate Record Examinaton \(GRE\)](#), Dental Admissions Test (DAT), Optometry Admissions Test (OAT) or the [Medical College Admissions Test \(MCAT\)](#).
- The preferred exam is the PCAT but there may be occasions we will accept the above scores in lieu of the PCAT. If you wish to substitute the PCAT for one of these exams, you must submit a [standardized exam substitution request form](#).
- More information about the minimum scores and process can be found at: <https://pharmacy.ouhsc.edu/programs/doctor-of-pharmacy/admission>

WHAT'S NEW FOR RECRUITMENT

- PharmD Early Assurance Program for high school seniors or non-science bachelor's degree holders. We accepted 17 students this year!
- Pillars for Success – Undergraduate Camp. Application opens in January 2020. Kaplan PCAT Prep now included!
- Mobile Pharmacy Recruitment – Pharmacy Leadership students have created a variety of activities to engage students in the classroom.



College of Pharmacy

IMPORTANT DATES FOR 2018-2019

- Pharmacy Interview Preparation Workshop: Sat, Sept 21 9:00 am-12:00 pm
- Early Decision Application Deadline: Tue, Sept 3, 2019
- Early Decision Interviews: Sat, Oct 5th, 2019
- College of Pharmacy Advisors Workshop: Friday, April 3rd
- Regular Decision Interviews: Sat, Feb 22nd, Sat, Apr 18th & Sat, June 20th, 2020
- Pillars for Success Camp: Application opens January 2020. Camp is May 11-15 and 18-22, 2020. Participants must attend both weeks.

WHY OU PHARMACY?

Degree Options

- Leadership
- Ambulatory Care
- Nuclear
- Pediatrics
- Research

Unique Opportunities

- Residencies
- Poison & Drug Info Center
- Nuclear Pharmacy
- Graduate programs
- Faculty Research

Health Sciences Center Advantages

- Interdisciplinary opportunities
- University owned or affiliated hospitals, clinics, and pharmacies
- OKC Thunder are five minutes away.



College of Pharmacy

Pillars for Success Undergraduate Pharmacy Camp



Pharmacy Shadowing

Community Engagement



Kaplan PCAT Prep

Interview Preparation



Leadership
Development

Financial Literacy

May 11-15 and 18-22, 2020.

CONTACT INFORMATION

Jennifer L. Richardson
Director, Recruitment & Admissions
405-271-6598
jennifer-richardson@ouhsc.edu

Katie Perry
Coordinator, Recruitment & Admissions
405-420-2563
katherine-perry@ouhsc.edu

<http://pharmacy.ouhsc.edu>

oupharmd@ouhsc.edu

<https://www.facebook.com/OUPharmacyAdmissions/>

<https://www.youtube.com/channel/UCO1k6ig8RORRAJFeBdkIOBg>

College of Pharmacy

TWINS...



THANK YOU FOR ALL YOU DO!



College of Nursing



College of Nursing

Kara Pekah

Student Advisor

nursing@ouhsc.edu



OU NURSING EXCELLENCE

- ✓ Oklahoma's largest and oldest nursing program
- ✓ Led by over 90 highly qualified full-time faculty members
- ✓ Each year more than 400 students graduate from the bachelor's, master's and doctoral programs
- ✓ NCLEX passing scores for our BSN graduates is currently 97% which exceeds both the state and national average
- ✓ More than \$350,000.00 in scholarships awarded in 2019



College of Nursing

Undergraduate Programs

- Traditional BSN (2+2 track)
- Accelerated BSN (14-months, second degree students)
- Degree Completion (9-months – other tracks offered)
 - LPN-to-BSN (for licensed LPNs)
 - RN-to-BSN (for licensed RNs)

Traditional BSN

- 2-years traditional (fall/spring) curriculum
- Minimum CUM and Science GPA of 2.50
- Competitive GPAs: 3.4 and higher
- 67-hrs prerequisites completed prior to BSN enrollment
- Available at: Lawton, Oklahoma City and Tulsa
- Application deadline: January 15

College of Nursing

Traditional BSN – Early Admit

- For OU Norman students
- Requirements:
 - 24 hours completed at OU Norman
 - 2 of 4 prereq sciences completed, 1 at Norman
 - 3.4 cum and 3.0 science GPA
 - Successfully complete prereqs by end of summer
- Application deadline: October 15

Traditional BSN - Honors

- Admitted to OU Norman and Honors College as freshman
- Complete prerequisites at OU Norman
- Complete Honors coursework at OU Norman
- Maintain 3.4 CUM and 3.0 Science GPA at application
- Apply to OU Nursing through Early Admission
- Complete additional honors hours in senior year
- Graduate with BSN degree with Honors

Contact: OU Scholars Program
(405) 325-2851

College of Nursing

Accelerated BSN (ABSN)

- Entrance Requirements
 - BA/BS degree in non-nursing field
 - 11 specific prerequisite courses
 - Minimum 2.50 GPA in Last 60 hours and sciences
 - Competitive GPAs: 3.3 and higher
- 14-months of intensive study
- Application deadlines:
 - Lawton: October 15, spring start
 - OKC and Tulsa: November 1, summer start



Accelerated BSN (ABSN)

- Entrance Requirements
 - BA/BS degree in non-nursing field
 - 11 specific prerequisite courses
 - Minimum 2.50 GPA in Last 60 hours and sciences
 - Competitive GPAs: 3.3 and higher
- 14-months of intensive study
- Application deadlines:
 - Lawton: October 15, spring start
 - OKC and Tulsa: November 1, summer start



College of Nursing

LPN-BSN & RN-BSN

- Entrance Requirements
 - Same prerequisites as Traditional BSN
 - Require 2.50 GPA in Last 60 hours and sciences
 - LPNs required to pass entrance exams (Med Surg, Peds, OB, Mental)
 - No entrance exam for RNs
 - One-year experience (1,000 hours)
- Hybrid, internet-based study with class on campus one Saturday per month (on campus attendance optional for RNs)
- Three enrollment options: full-time (9months), part-time (4 semesters), spring start/ 3 semesters
- Deadlines: October 15 and April 1



Successful BSN Applications

- Competitive GPA's. No academic forgiveness
- Finish sciences early
- Complete prerequisites in timely manner
- Do not fail prerequisite courses
- Confirm course transferability
- Check application status routinely



College of Nursing

MSN Program



- Education

MSN: Education Pathway

- For academic or clinical educators
- 32-credit-hour program
 - 14 credit hours for Post-Masters Certificate (PMC)
- 100% online plus 320 hours practicum experiences
- Full time(14 months) and part time(2 yrs) tracks with PMC option
- Application deadlines: October 15 and April 1
- Career options: clinical/adjunct/full time faculty
- ✓ Consistently ranked by *U.S. News and World Report* as one of the **Best Online Graduate Nursing Programs** since 2015

Contact: Dr. Patsy Smith
(405) 271-1491, extension 49157

College of Nursing

MSN: Admission Criteria

- BSN degree
- Oklahoma RN license
- 3.0 GPA in last 60 hours
- Statistics course
- Research course
- Three letters of reference

*PMC: same criteria, plus completion of MSN degree from regionally accredited institution



Doctoral Programs

- PhD
Research Doctorate
- DNP
Practice Doctorate



College of Nursing

Doctoral: PhD

- BSN-PhD and MSN-PhD tracks
- Application deadline: April 1- fall start
- 100% online program
- Require: BSN or MSN, 3.50 GPA, GRE, recommendations, interview, and identification and match of research goals
- Multiple scholarship funds are available

Contact: Dr. Emily Jones
(405) 271-1491, EXT. 49135



Doctoral: BSN to DNP

- The University of Oklahoma Health Sciences Center, Fran and Earl Ziegler College of Nursing is pleased to announce applications are being accepted for the BSN-DNP Program. Three pathways are available: BSN-DNP Family Nurse Practitioner, BSN-DNP Clinical Nurse Specialists Adult/Geriatric Acute Care, BSN-DNP Executive Leadership
- Information Sessions to be held in Oklahoma City, Tulsa and Lawton at the following times:
 - September 26th from 11:30 AM – 1:00 PM
 - September 30th from 6:00 PM – 7:30 PM
 - October 2nd from 10:00 AM – 11:30 AM
 - October 21st from 10:00 AM – 11:30 AM

Contact: Dr. Amy Costner-Lark
Amy-CostnerLark@ouhsc.edu



College of Nursing

Programs by Campus (class size limits)

Campus Site	Traditional Program	Career Mobility	Accelerated BSN	Education MSN	PhD	DNP
Lawton	X (39)	X	X (18)	X		X
Oklahoma City	X (125)	X (Varies)	X (45)	X	Online	X
Tulsa	X (45)	X	X (40)	X		X

- Class size limits indicate selective admission.
- Applicants to selective programs/campuses are advised to prepare a strong application.

Application Deadlines

Start Term	Traditional Program	Career Mobility	Accelerated BSN	MSN	PhD / DNP
Fall	October 15 <small>(early)</small> January 15 <small>(regular)</small>	April 1		April 1	April 1 (PhD)
Spring		October 15	October 15 <small>(Lawton campus)</small>	October 15	
Summer			November 1		January 15 (DNP)

College of Nursing

We are here to help!

- We are available to:
 - Provide on-site advisement sessions
 - Speak to clubs at your school
 - Participate in career/education fairs
- Contact Nursing@ouhsc.edu

Campus Contacts

I have questions about:	I should contact:
Lawton Cameron University campus	Melinda Smith (580) 591-8091 Melinda-r-smith@ouhsc.edu
Oklahoma City Health Sciences Center campus	Gloria Renuae (405) 271-2402 Gloria-Renuae@ouhsc.edu
Tulsa Schusterman Center campus	Dawn Johnson (918) 660-3951 Dawn-Johnson@ouhsc.edu



Hudson College of Public Health

What Is Public Health?

* <https://www.youtube.com/watch?v=VNBF8jg6DBs&feature=youtu.be>

Public Health: Who Works It?

Public health is a network of professionals that promotes and protects the health of people and the communities where they live, learn and play.

- Health educators
- Scientists and researches
- Social workers
- Epidemiologists
- Occupational health and safety professionals
- Public policy makers
- Health Administrators

Hudson College of Public Health

Public Health Network: Who does the math?

Biostatistics

Using statistics and math to analyze public health problems.

Undergraduate major/interest:

Mathematics, statistics

Public Health Network: Who tracks the problems?

Epidemiology

Studying patterns of disease and injury in groups of people and using science to control health problems.

Undergraduate major/interest:

biology, microbiology, zoology

Hudson College of Public Health

Public Health Network: Who allocates the resources?

Health Administration and Policy

Studies use, costs, quality, accessibility, delivery, organization, financing and outcomes of health care services

Undergraduate major/interest: **business, finance, economics, political science, marketing**

Public Health Network: Who spreads the word?

Health Promotion Sciences

Study of ways to help people choose healthier lifestyles, make better use of health services, adopt self-care practices, participate actively in programs that affect health.

Undergraduate major/interest: **sociology, psychology, anthropology, criminology, biology**

Hudson College of Public Health

Public Health Network:
Who monitors the environment and the
workplace?

Occupational and Environmental Health

Studies health & safety hazards at work and ways to prevent disease and injuries in the work place

Studies factors in the environment which affect health including studies in

- air quality
- water quality
- food quality

Public Health Network:
Who monitors the environment and
the workplace?

Occupational and Environmental Health

Undergraduate major/interest:
chemistry, engineering, agriculture, earth sciences

Prerequisite courses: Chemistry through organic and math through calculus

Hudson College of Public Health

Public Health Network:
There's a place for the generalist, too.

Interdisciplinary MPH

Interdisciplinary tract provides broad-based knowledge and skills in public health practice

Undergraduate major/interest:

All listed previously plus professional health care

Degrees and programs

- Professional – MPH, MHA
- Graduate – MS, PhD
- Certificate in Public Health
- Certificate in Health Administration for current OU MBA students and for MBA graduates
- Dual Degrees with other OU Programs –
- BS/MS Biostatistics; MD/MPH; JD/MPH;
- MSW/MPH; MHA/JD

Hudson College of Public Health

Attention: OU-Norman

- Bachelor of Public Health (BPH)

Coming Soon

- Accelerated MPH Degree for students in the Bachelor's of Public Health (BPH), BS and BA Community Health degree programs

Admission Requirements

- Bachelor's degree
- 3.0 GPA - upper division coursework
- Completed applications
SOPHAS and COPH supplemental
- Three recommendations
- Career Goal Statement
- Current résumé
- GRE (not required for accelerated MPH)
- International applicants: TOEFL and WES evaluation of international coursework

Hudson College of Public Health

Contact: College of Public Health

- Email: coph@ouhsc.edu
- Phone: Toll-free 877 805-6901 or
405 271 2308
- Web site:
<http://publichealth.ouhsc.edu/>

Physician Associate Program



PHYSICIAN ASSOCIATE PROGRAM

- University of Oklahoma, Health Sciences Center
- College of Medicine
- Department of Family and Preventive Medicine
- Oklahoma City, Oklahoma



History

- OUHSC-OKC PA Program was established in 1970
- 27-month program with graduates earning a Master of Health Science degree upon successful completion of the program.
- Accredited by the Accreditation Review Commission on Education for the Physician Assistant (ARC-PA)



Physician Associate Program



Tulsa PA Program



- Established in 2008
- Part of the University of Oklahoma School of Community Medicine
 - Tulsa and OKC PA programs are independently accredited
- Tulsa PA Program has a separate application process
 - CASPA application available at www.caspaonline.org
 - Supplemental application through OUHSC
- Students applying to both programs MUST complete application and submit supplemental information (letters of recommendations, personal statements, resumes, etc.) to **BOTH** programs.



OUHSC-OKC PA Program



- Classes begin early-June
- Graduation in October
- Curriculum is divided into three sections:
 - Didactic Component
 - Clinical Component
 - Summative Component



Physician Associate Program



PANCE



Physician Assistant National Certifying Examination Five Year First Time Taker Summary Report

Program Name: University of Oklahoma - Oklahoma City

Program Number: 1024

Report Date: 03-29-2019

Definitions of the report headings are provided at the end of the report.
All information is current as of the date the report was generated.

Class	Class Graduation Year	Number of First Time Takers	Program First Time Taker Pass Rate	National First Time Taker Pass Rate for the Class Graduation Year
November 2014	2014	54	98%	95%
December 2015	2015	47	91%	96%
December 2016	2016	53	89%	96%
December 2017	2017	49	98%	97%
October 2018	2018	49	98%	98%



Admission Information



Application Deadline **OCTOBER 1**



Physician Associate Program



Application Criteria



- Requirements
 - Application
 - Prerequisites
 - Bachelor's Degree
 - Grade Point Averages and GRE
 - Resume
 - Personal Statement
 - Letters of Recommendations
 - Personal Interview
 - CASPer



Application



- Deadline is **OCTOBER 1**
 - **Applications will be available through CASPA on June 1st**
 - It is the applicant's responsibility to ensure ALL application materials are submitted to CASPA by October 1 caspainfo@caspaonline.org
 - A supplemental application must also be submitted to OUHSC office of admissions and records by October 1 <https://apps.ouhsc.edu/admissions/>
 - **Failure to have all materials submitted by October 1st will result in an incomplete application. Incomplete applications are not considered for interviews.**
 - Apply early, allows time to submit missing or incomplete information
 - It can take CASPA up to 4 weeks to verify submitted information

Physician Associate Program



Application



- Check Application Status
 - Applicants should check the CASPA Applicant Portal <https://portal.caspaonline.org/> frequently to verify that references, personal statements, and transcripts have been received and verified
 - All application materials received for the supplemental application will be posted on the admissions website <http://www.ouhsc.edu/admissions/Home.aspx>

CASPA



CASPer



- New Requirement
 - The CASPer test assesses non-cognitive skills and interpersonal characteristics important for successful students and graduates of the program and is used to complement the other applicant screening tools. Completion of the CASPer test is required; results are valid for one admissions cycle.
 - [Test dates are limited! Test dates may be found at https://takecasper.com/test-dates/#testdates.](https://takecasper.com/test-dates/#testdates)
 - Learn more here and at <https://takecasper.com>.

Physician Associate Program



Prerequisites



- No more than one science and non-science prerequisite can be in progress after December 31st of the year prior to enrollment in the program.
- A bachelor's degree must be earned prior to matriculation from an accredited college or university.



Prerequisites



- Non-Science
 - College Algebra (or higher)
 - Psychology
 - Psychology Elective (NOT sociology)

Physician Associate Program



Prerequisites



- Science

The following courses are **required** with a letter grade of "C" or better

- General Chemistry I
- General Chemistry II
- Human Anatomy
- Physiology
- Microbiology
- Pathogenic Microbiology, Immunology, Genetics, or Virology

- *One semester of Anatomy and one semester of Physiology OR two semesters of a combined anatomy and physiology course (A&P)*
- *There is no preference for one course over another for pathogenic microbiology, immunology, genetics, or virology*



GPA



Class Year	Total GPA	Science GPA	Last 60 GPA
Class of 2019	3.42	3.29	3.62
Class of 2020	3.74	3.69	3.81
Class of 2021	3.80	3.73	3.85

Physician Associate Program



Gender



Class Year	Male	Female
Class of 2019	34%	66%
Class of 2020	30%	70%
Class of 2021	20%	80%



GRE



Class Year	Score
Class of 2019	305
Class of 2020	302
Class of 2021	305

Physician Associate Program



Average Age



Class Year	Age
Class of 2019	30.29
Class of 2020	25.08
Class of 2021	23.49



Residency



Class Year	In State	Out of State	Other
Class of 2019	68%	32%	0%
Class of 2020	84%	16%	0
Class of 2021	85%	15%	0%

Physician Associate Program



Patient Contact Hours



Class Year	Average Patient Contact Hours
Class of 2019	3496
Class of 2020	1317
Class of 2021	1297



PA Shadowing



- A certain number of shadowing hours is not required
- Recommend shadowing PA's from the following:
 - Primary Care
 - Emergency Medicine
 - Specialty (dermatology, pediatrics...etc.)



Physician Associate Program



Shadowing



<http://pashadowonline.com/>



Shadowing Hours



Class Year	Shadowing Hours
Class of 2019	218
Class of 2020	115
Class of 2021	110

Physician Associate Program



Financial Commitment



- Due to the intense nature of the program students are discouraged from working
- Student loans are available to cover not only the cost of tuition and fees, but also the costs of daily life expenses
- Class of 2017 student loan debt reported 82,000, based on data from graduation exit survey



Program Costs-Tuition and Fees for 2018-2019 Academic Year Per Semester



Resident

1st year- \$4357.15
2nd year-\$4357.15
3rd year- \$3112.25

PA College Fees-\$34.40 per enrolled credit hour

Non-Resident

1st year- \$5469.10
2nd year-\$5469.10
3rd year- \$3906.50

PA College Fees-\$34.50 per enrolled credit hour

*Does not include books, medical equipment, or other required supplies

Physician Associate Program



Graduate College

Ouhsc Graduate College
<http://graduate.ouhsc.edu>



Gillian Air, PhD
Associate Dean



1



Degrees Offered

Master of Science (MS)
Doctor of Philosophy (PhD)

**32 programs housed in all six
professional colleges**



2

Graduate College

Who are we?



H. Anne Pereira, PhD
Dean, Graduate College



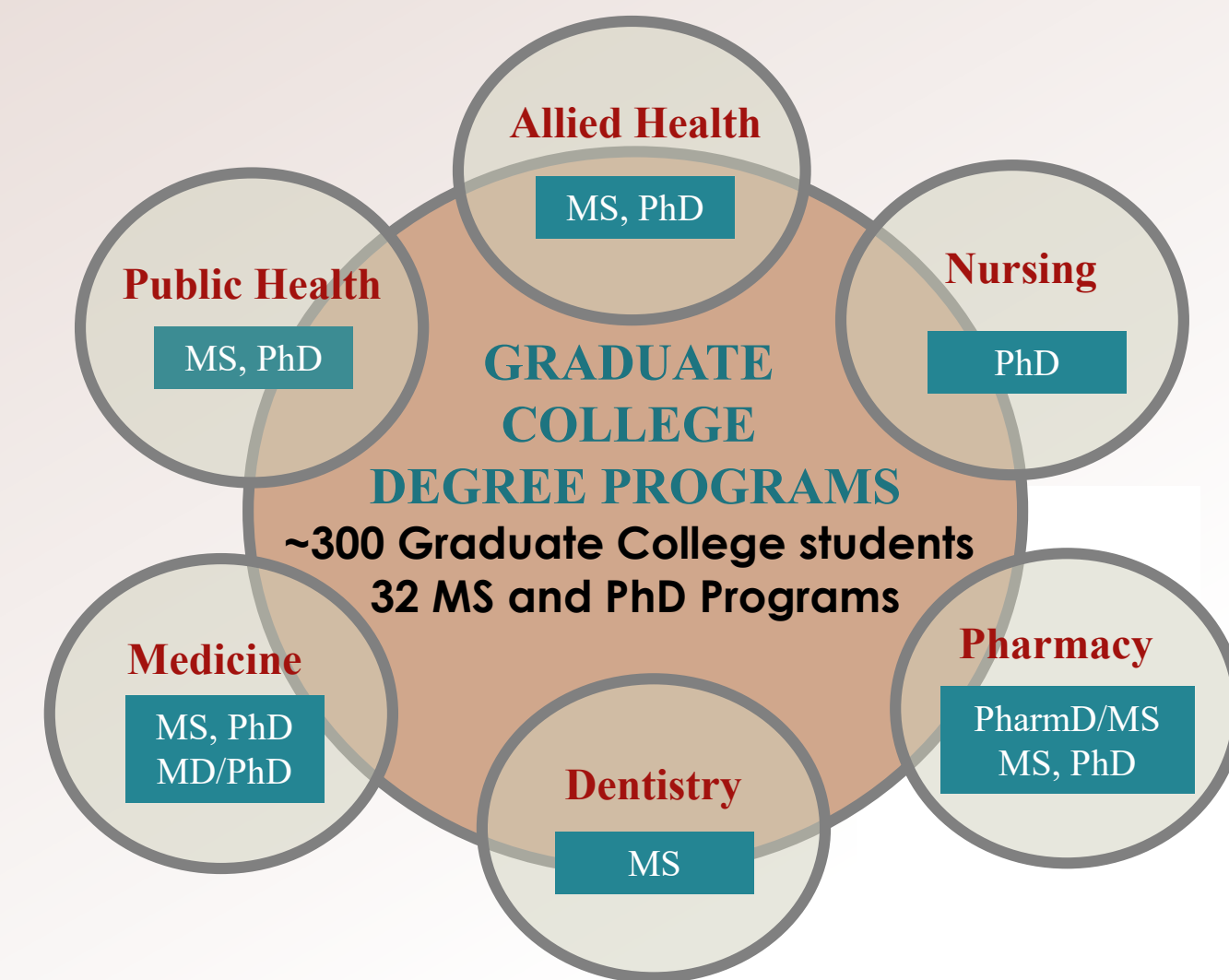
Gillian Air, PhD
Associate Dean, Graduate College



Michelle R. Staudt, PhD
Assistant Dean for Graduate Education

Each of the 32 programs has its own Program Director and administration staff

3



4

Graduate College

Graduate College programs

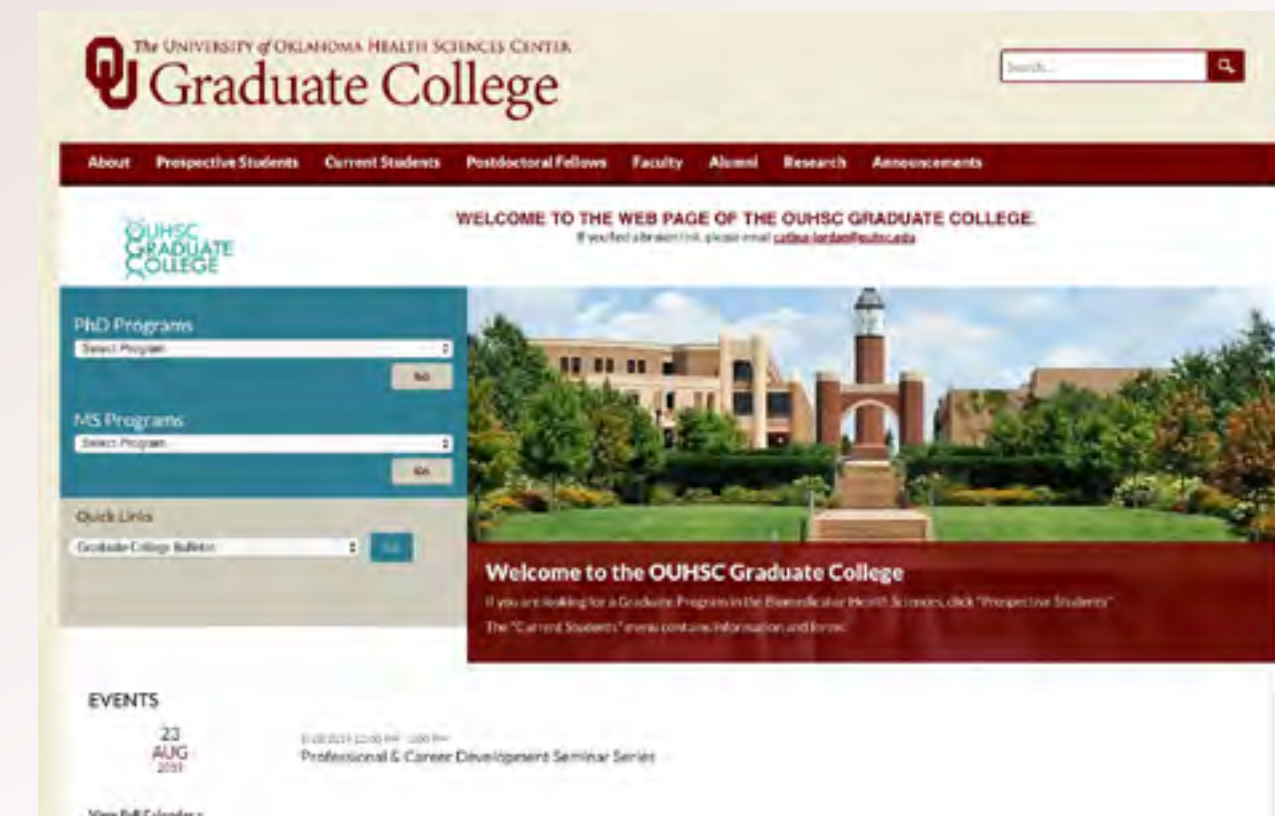


- Allied Health Sciences MS, PhD
 - Nutritional Sciences
 - Rehabilitation Sciences
- Biochemistry & Molecular Biology MS, PhD
- Biostatistics & Epidemiology MS, PhD
- Cell Biology PhD
- Clinical and Translational Science MS
- Communication Sciences and Disorders MS, PhD
- Genetic Counseling MS
- Health Promotion Sciences MS, PhD
- MD/PhD
- Microbiology & Immunology PhD
- Neuroscience MS, PhD
- Nursing PhD
- Occupational and Environmental Health MS, PhD
- Orthodontics MS
- Pathology MS, PhD
- Periodontics MS
- Pharmaceutical Science MS, PhD
- Physiology MS, PhD
- Radiological Sciences MS, PhD

5

Where to find information

<http://graduate.ouhsc>



6

Graduate College

Requirements for admission to the Graduate College

- Baccalaureate degree
- GPA \geq 3.0
- If English is second language, TOEFL score \geq 79 (iBT)

NOTE: Each program has additional requirements or recommended experience, especially in research. Information is on each program's web site or from the program contact

7

Admission Statistics

- Graduate Programs are quite small; some admit only 2 - 4 students per year. For these, personal contact with the program director or potential mentor is highly recommended.
- Our largest program, the umbrella Graduate Program in Biomedical Sciences, typically accepts about 25% of applicants.
- For many programs, relevant work experience, especially in research, is a significant indicator to predict student success.
 - Undergraduates should aim to have research experience, e.g. in summer programs or by volunteering
 - Such experience, and strong letters from supervisors, might be weighted more heavily than GPA (as long as \geq 3).

8

Graduate College

For those not accepted:

1. Look at other OUHSC programs to see if there is a better fit
2. Find a job for a year in your area of interest and re-apply
3. For some programs, you should first identify a mentor who is willing and able to serve as your thesis/dissertation committee chair.

9

Funding/Scholarship Opportunities

List of funding sources and application information is on Graduate College webpage under “Prospective Students”

- Graduate Assistantships (Teaching or Research)
 - Stipend support varies between programs, up to \$27,000 pa
- Stipend supplement of an independent fellowship by the Graduate College
- Boren Scholarships
- McNair Alumni Awards
- Sooner Heritage Scholarships
- Financial Aid lists scholarship opportunities
- Office of Research Administration weekly list



10

Graduate College

Master of Science Degree Overview

- Thesis or Non-Thesis Option – Program dependent
- Minimum of 30 hours
- Transfer Coursework
 - Coursework from OU Norman and OU Tulsa is NOT considered transfer.
 - Maximum of 25% of hours may be transferred from other institutions.
- Maximum time is 6 years.
 - Graduate credit must not be more than 6 yrs. old at the time of admission or readmission.



11

Doctor of Philosophy Overview

- 90 hour minimum
- Transfer Credit: Maximum of 44 hour
- General Exam: taken in the second or third year. Upon successful completion student is admitted to candidacy
- Culminates with written dissertation on original research and oral defense of dissertation

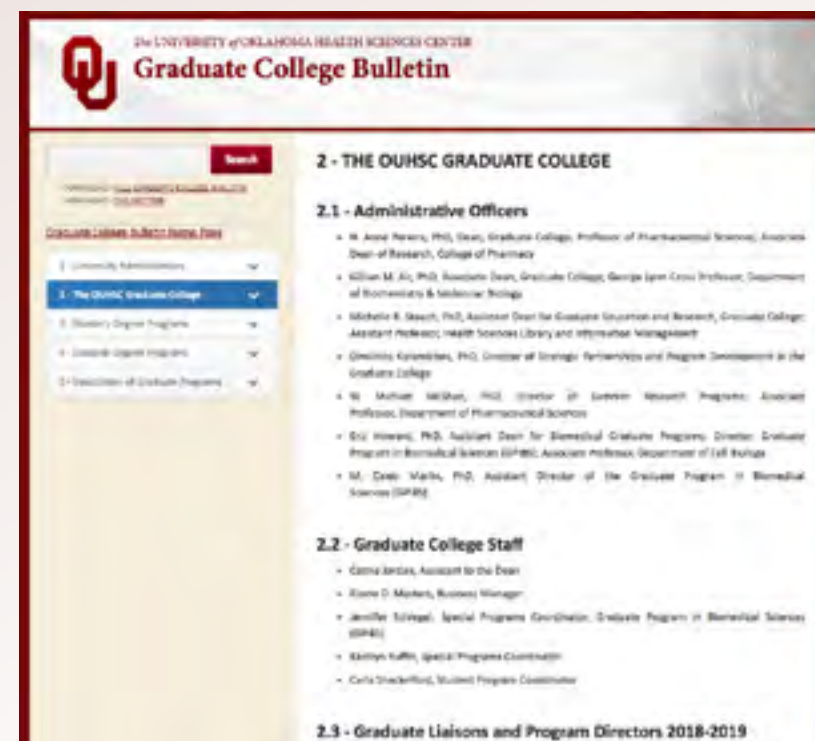


12

Graduate College

Graduate College Bulletin

<http://graduate.ouhsc.edu/CurrentStudents/GraduateCollegeBulletin.aspx>



Detailed information on programs and policies



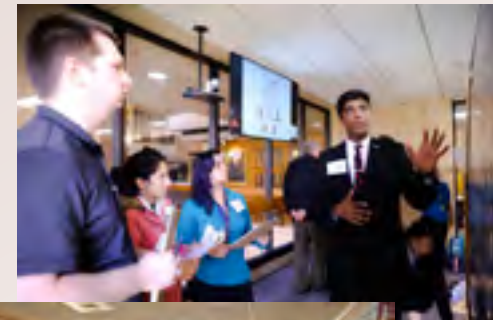
13

Graduate College students have wide activities

- We bring in outside speakers for Career and Professional Development discussions and workshops once a month
- We develop interdisciplinary courses
- We host social events for students and faculty
- Graduate College students regularly participate in community service
- We have Convocation each May to recognize our MS and PhD graduates

14

Graduate College



GREAT Symposium

**Graduate Research Education and
Technology Symposium**
March 23rd – March 26th, 2020

- Provides an opportunity for Graduate College students to showcase their research
- Poster & oral presentations categories
 - \$27,000 in travel grants awarded for winning presentations in 2019
- Workshops to help prepare
- Nationally renowned keynote speaker
- Career Workshops



15

Participation in Graduate College Governance

- The Graduate Student Association guides many Graduate College activities
- There is Student Representation on many Graduate College Committees



16

Graduate College

Preparing Future Faculty Program

- One-year interdisciplinary program
- Open to 2nd year MS and PhD students
- Transcript annotation on completion
 - **Fall**
Methods course: to familiarize students with the requirements of an academic position.
 - **Spring**
Practicum: participants teamed with mentor to gain teaching experience at neighboring undergraduate institutions.



17

graduate.ouhsc.edu

or

email
gradcollege@ouhsc.edu



18

Graduate College - GPiBS Program

University of Oklahoma Health Sciences Center
Graduate Program in Biomedical Sciences

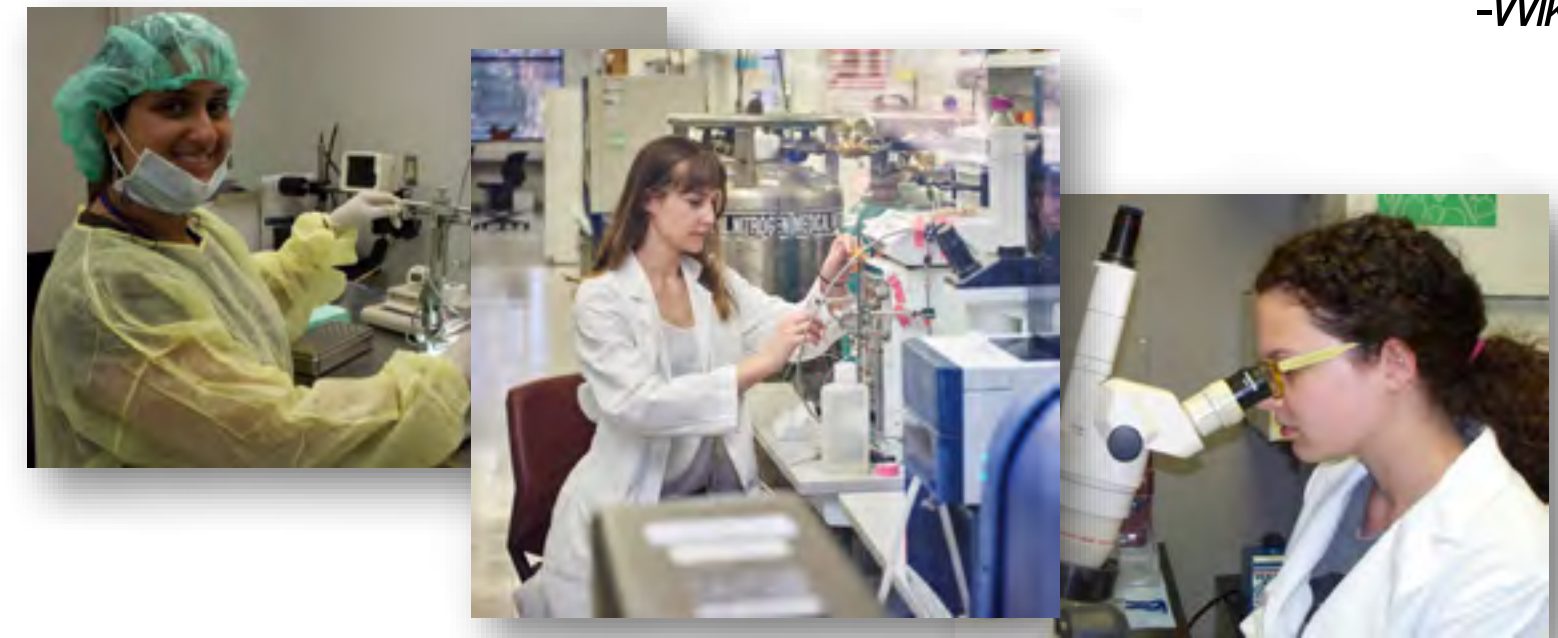
M. Caleb Marlin, PhD – Assistant Director of GPiBS



What is a Biomedical Research Scientist?

“... Scientists (that) work to gain knowledge on the main principles of how the human body works and to find new ways to cure or treat disease by developing advanced diagnostic tools or new therapeutic strategies.”

-Wiki



Graduate College - GPiBS Program

What a Biomedical Scientist Does



Careers in the Biomedical Sciences

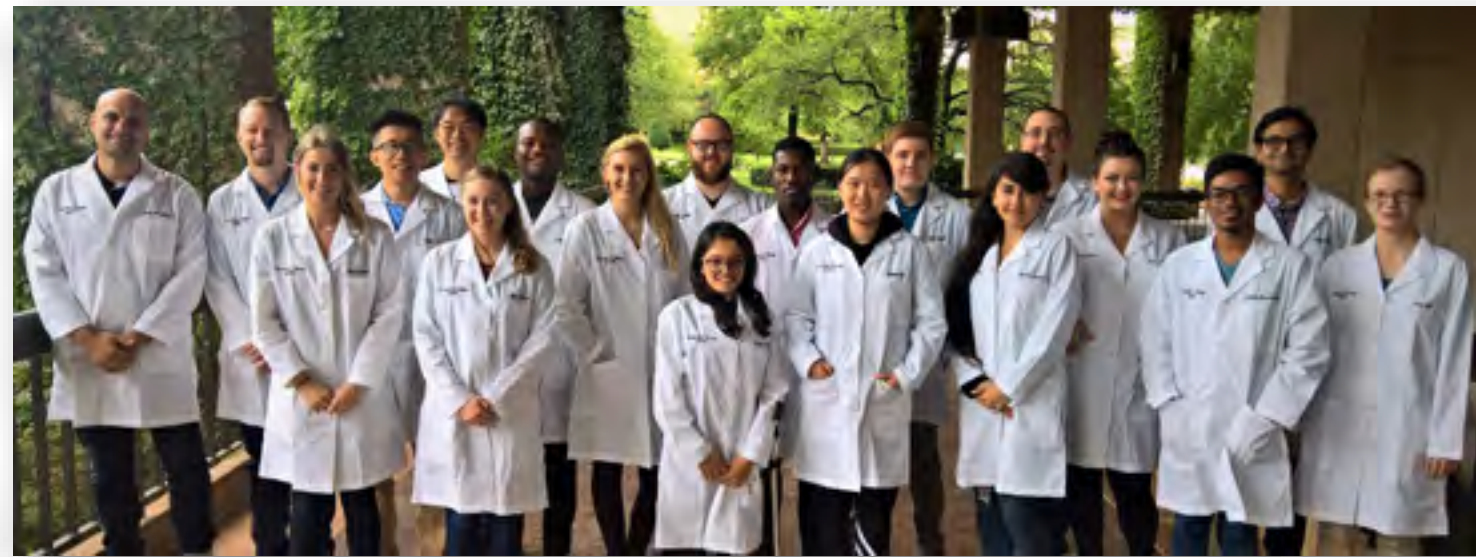
- Academic Research
- Biotech Research
- Education
- Academic Administration
- Patent Law
- Scientific Writing



Graduate College - GPiBS Program

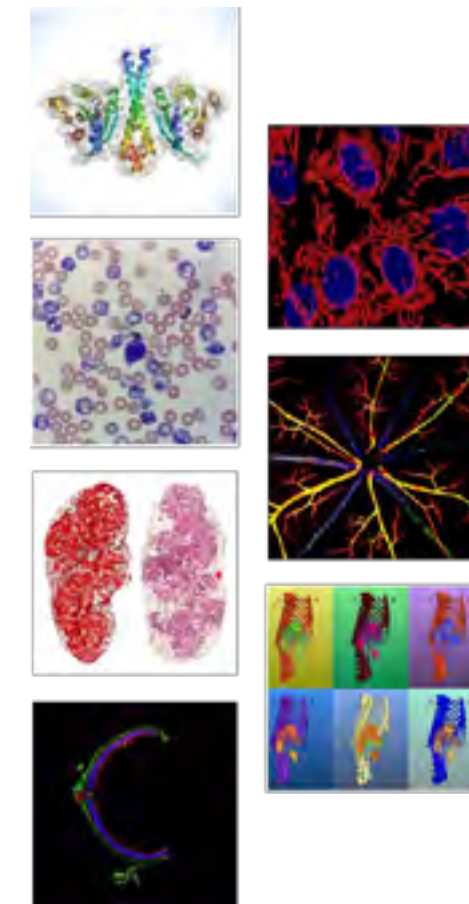
The Graduate Program in Biomedical Sciences

- GPiBS is a first-year umbrella Biomedical Research training program under the OUHSC graduate college.



Participating Programs

- Biochemistry & Molecular Biology
- Cell Biology
- Microbiology & Immunology
- Neuroscience
- Pathology
- Pharmaceutical Sciences
- Physiology



Graduate College - GPiBS Program

Program Benefits

- **NO** Application Fee
- Full tuition and Fees Waiver
- Generous Stipend
 - **\$26,000/year**
- Free Health Care / Student Clinic
- OUHSC Health Club Access



YOU GET TO DO RESEARCH!!!



GPiBS Timeline

- Apply to GPiBS between Sept-Feb. and get accepted.
- Year 1: Heavy Classwork and Lab Rotations.
 - Students pick a lab/dept. by the end of the spring semester.
- Year 2: Departmental Specific Classwork.
 - Students take a qualifying exam at the end of the second year
- Year 3-6
 - Students perform doctoral research, publish papers, attend meetings, etc.
 - Students defend their dissertation and receive their PhD.



Graduate College - GPiBS Program

Application Statistics

Year	Applied	Accepted
2014	66	19
2015	49	19
2016	65	15
2017	68	20
2018	84	20
2019	115	24



Accepted Application Statistics

Year	Average GPA	Average Research
2014	3.77	16.8*
2015	3.53	15.8*
2016	3.62	14.3
2017	3.62	14.6
2018	3.64	15.5
2019	3.65	15.7
Average	3.64	15.5 mos



Graduate College - GPiBS Program

Recommended Coursework

- Upper Division Biological Sciences
 - Cell Biology
 - Molecular Biology
 - Microbiology
 - Physiology
 - Immunology
 - Genetics
- Organic Chemistry
- Biochemistry
- Calculus
- Physics



Application Process

- Online application includes
 - Applicant information
 - Transcripts
 - Personal Statement
 - 3 Letters of Recommendation

*No GRE Scores Required

Research Experience!!!



Graduate College - GPiBS Program

Message from the Director

"A strong applicant has a good GPA and a degree in the hard sciences with high grades in many of our recommended courses. A strong applicant will also have multiple research experiences in the biomedical sciences and a strong understanding of the rationale, experimentation, and findings of their research projects. While not all applicants will have high marks in all these categories, they do have an enthusiastic and motivated attitude towards research."



Eric Howard - Director, GPiBS



Summer Undergraduate Research Programs



\$5,000 for 8-weeks of lab work at OUHSC or institutes across the state.



Graduate College - GPiBS Program

Summer Undergraduate Research Programs

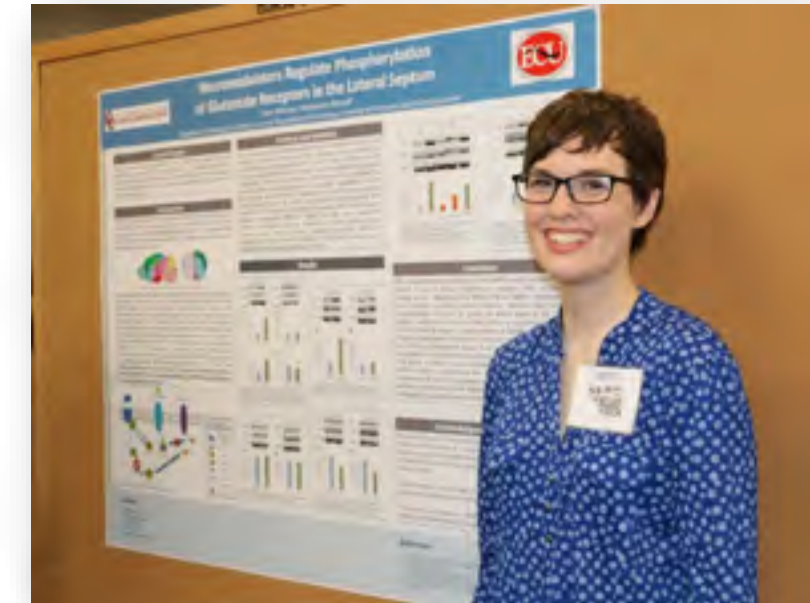


SURE: Summer Undergraduate Research Experience Program
NARCH: Native American Research Center for Health Student Development Program
OK-INBRE: IDEa Network of Biomedical Research Excellence Summer Research Program
CURE: Cancer Undergraduate Research Experience



Program Benefits

- **NO** Application Fee.
- Generous Stipends:
 - NARCH: \$6,000
 - SURE: \$5,000
 - OK-INBRE: \$5,000
 - CURE: \$5,000
- Enrichment sessions.
- Work on poster presentation skills.
- Compete for a cash prize and chance to represent OUHSC at the capitol.



YOU GET TO DO RESEARCH!!!



Graduate College - GPiBS Program

Enrichment Sessions

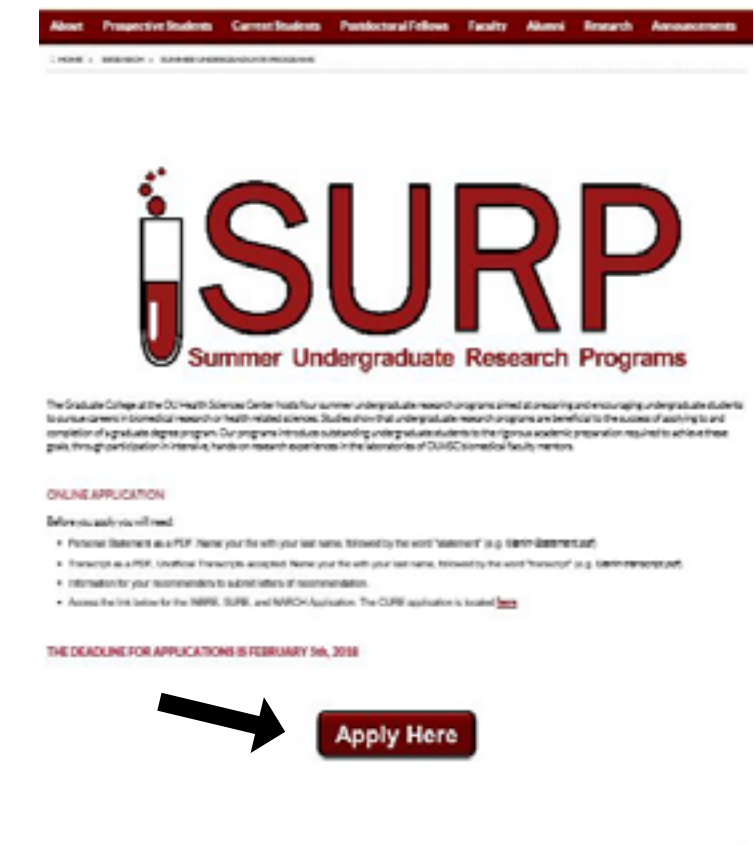
- Journal Clubs and How to read a paper
- Writing an Abstract
- Designing a Poster in PowerPoint
- MD and MD/PhD Discussion
- Graduate Programs Roundtable
- GPiBS Admissions and How to write a great Personal Statement.
- How to Present a Research Poster



Application Process

Online application includes:

- Applicant information
- GPA (Tot and Sci)
- Transcripts
- Personal Statement
- 2 Letters of Recommendation



Graduate College - GPiBS Program

Contact Us



Jennifer Schlegel
Coordinator GPiBS



Dr. Caleb Marlin
Assistant Director GPiBS



Dr. Eric Howard
Director GPiBS



GPiBS@ouhsc.edu



www.ouhsc.edu/gpibs



(405) 271-2406



@OUHSC_GPiBS



College of Allied Health



alliedhealth.ouhsc.edu

College of Allied Health

We Empower Life!

The University of Oklahoma Health Sciences Center



The University of Oklahoma Health Sciences Center
College of Allied Health

alliedhealth.ouhsc.edu

Susan B. Tucker, MPH, OTR/L, FAOTA

Assistant Dean for Student Affairs

Assistant Professor

susan-tucker@ouhsc.edu

405.271.6588

Paije Fauser, BA

Director for Student Services (OKC)

paije-fauser@ouhsc.edu

405.271.6588

Kyle Miller Shawnee, BA

Recruiting Specialist (Tulsa)

kyle.miller@ou.edu

918.660.3318



College of Allied Health

alliedhealth.ouhsc.edu

The University of Oklahoma Health Sciences Center
College of Allied Health

Thank you!

Gracias

Teşekkürler

Ευχαριστώ

Obrigado!

Grazie

Köszönettel

THANK YOU

Merci

Vielen Dank



alliedhealth.ouhsc.edu

The University of Oklahoma Health Sciences Center
College of Allied Health



The University of Oklahoma
College of Allied Health



College of Allied Health

The University of Oklahoma Health Sciences Center
College of Allied Health



alliedhealth.ouhsc.edu



alliedhealth.ouhsc.edu

Demand

Fastest Growing Occupations - USA 2016 - 2026

- Physical Therapists 28% change
- Occupational Therapists 24% change
- Audiologists 21% change
- Speech-Language Pathologists 18% change
- Sonographers 17% change
- Dietitians 15% change
- Radiation Therapists 13% change
- Radiographers 13% change
- Nuclear Medicine Technologists 10% change

U.S. Department of Labor Statistics
www.bls.gov



College of Allied Health

alliedhealth.ouhsc.edu

Salary

USA - mean annual estimates

- Audiologist \$75,920
- Dietitian \$60,370
- Nuclear Medicine Technologist \$76,820
- Occupational Therapist \$84,270
- Physical Therapist \$87,930
- Radiation Therapist \$82,330
- Radiographer \$61,240
- Sonographer \$67,080
- Speech-Language Pathologist \$77,510

U.S. Department of Labor Statistics
www.bls.gov



The University of Oklahoma Health Sciences Center
College of Allied Health

alliedhealth.ouhsc.edu

Education



The University of Oklahoma Health Sciences Center
College of Allied Health

College of Allied Health

alliedhealth.ouhsc.edu

Admission Requirements

- Prerequisites
 - Symbolic & Oral Communication
 - Natural Sciences
 - Social Sciences
- Minimum gpa
2.5 or 2.75 or 3.0
- OT & PT: 40 hours of observation experience
- OT, PT, Audiology, Speech-Language Pathology/Graduate: GRE General Test



Application Procedure

alliedhealth.ouhsc.edu

DEADLINES

- February 1: AuD, NS, OT, PT, SLP
- March 1: CSD, MIRS
- Various dates (see website): Grad level programs

APPLICATION

- <http://alliedhealth.ouhsc.edu/ProspectiveStudents/ApplyingtoaProgram.aspx>
- \$100.00 application fee (\$50 OUHSC & \$50 CAH)
- OT & PT: Centralized Application Service
- Official, sealed transcripts
- Career goal statement
- Observation (OT & PT)
- List of 3 references/letters (some programs)



College of Allied Health

alliedhealth.ouhsc.edu

Applicant Pool 2019

Program	Applied	Admitted
Communication Sciences & Disorders – BS	41	33
Speech-Language Pathology – MA	129	21
Audiology – AuD	33	6
Nuclear Medicine – BS	14	10
Radiation Therapy – BS	17	10
Radiography – BS	21	13
Sonography – BS	48	24
Dietetics – MA	32	21
Nutritional Sciences – MS	20	13
Occupational Therapy – MOT	155	35
Physical Therapy – DPT	603	63



The University of Oklahoma Health Sciences Center
College of Allied Health

alliedhealth.ouhsc.edu

2019 Admitted Students



- 80% are Oklahoma residents
- 20% are non-Oklahoma residents



The University of Oklahoma Health Sciences Center
College of Allied Health

College of Allied Health

alliedhealth.ouhsc.edu

The University of Oklahoma Health Sciences Center
College of Allied Health

Department of Communication Sciences and Disorders

Program	Average cum gpa	Average GRE
Communication Sciences – BS (33)	3.60	NA
Audiology – AuD (6)	3.91	303/4.0
Speech-Language Path – MA (21)	3.87	300/4.0

Suzanne Kimball



alliedhealth.ouhsc.edu

The University of Oklahoma Health Sciences Center
College of Allied Health

Department of Medical Imaging and Radiation Sciences

Program	Average cum gpa	Average sci gpa
Nuclear Medicine – BS (10)	2.99	2.51
Radiation Therapy – BS (10)	3.42	2.95
Radiography – BS (13)	3.25	2.94
Sonography – BS (24)	3.69	3.52

Marissa Mangrum



College of Allied Health

alliedhealth.ouhsc.edu

The University of Oklahoma Health Sciences Center
College of Allied Health

Department of Nutritional Sciences

Program	Average cum gpa	Average sci gpa
Dietetics – MA (21)	3.52	3.22
Nutritional Sciences – MS (13)	3.56	3.16

Leah Hoffman



alliedhealth.ouhsc.edu

The University of Oklahoma Health Sciences Center
College of Allied Health

Department of Rehabilitation Sciences

Program	Average cum gpa	Average sci gpa	Average GRE
Occupational Therapy – MOT (35)	3.66	3.32	299/3.9
Physical Therapy – DPT (63)	3.79	3.54	302/4.0

Vince Lepak



College of Allied Health

alliedhealth.ouhsc.edu

The University of Oklahoma Health Sciences Center
College of Allied Health

Questions/Discussion




College of Dentistry



2

Kevin L. Haney, DDS, MS Assistant Dean of Student Affairs

University of Oklahoma College of Dentistry
1201 N. Stonewall Avenue, Room 509
Oklahoma City, OK 73117-1214
(405)271-3530



Dentistry.ouhsc.edu

College of Dentistry

3

Heidi M. Martin

Admissions Student Program Coordinator

University of Oklahoma College of Dentistry
1201 N. Stonewall Avenue, Room 516
Oklahoma City, OK 73112
(405) 271-3530

Heidi-Martin@ouhsc.edu

Dentistry.ouhsc.edu

DEMAND FOR DENTISTRY IS HIGH!

- People keeping teeth longer
 - High demand for esthetic dentistry
 - Advancements in dental technology!
- National emphasis on access to care
- Awareness of relationship between oral health and general health
- Greater number of dentists retiring (2015)

College of Dentistry

**Favorable
Employment
Outlook**



College of Dentistry

U.S. News A WORLD REPORT

The 100 Best Jobs

All jobs aren't created equal. In fact, some are simply better than the rest. *U.S. News* 100 Best Jobs of 2013 are the occupations that offer a mosaic of employment opportunity, good salary, manageable work-life balance, and job security.

#1 Dentist
Overall Score: 8.4 | **Median Salary** \$151,440 | [See Job Openings](#)

Ever heard the phrase "Your face is your fortune"? For dentists, our smile is their fortune. They earn their living diagnosing and treating teeth and gums, performing oral surgery, and counseling and educating us on maintaining proper oral health. The profession should grow 21.1 percent by 2020.

#30 Dental Hygienist
Overall Score: 7.7 | **Median Salary** \$74,070 | [See Job Openings](#)

Did you know that dental hygienists make yearly salaries of about \$75,000, but many only work part-time? Something else to consider: This profession should grow at a breakneck clip as practices hire more hygienists to boost their patient roster.

Best Jobs 2019 – U. S. News
 From the dentist's chair, to the preschool classroom, to the veterinarian's office, these top jobs are in – demand, pay good salaries, and provide job satisfaction.

Rankings Lists

100 Best Jobs

- #1 Software Developer
\$101, 790
- #2 Statistician
\$84, 060
- #3 Physician Assistant
\$104, 860
- #4 **Dentist**
\$151,440

[See the full list of 100 Job Rankings...](#)

100 Best Health Care Jobs

- #1 Physician Assistant
\$104,860
- #2 **Dentist**
\$151,440
- #3 Nurse Anesthetist
\$165,120
- #4 Orthodontist
\$208,000

[See the full list of 100 Job Rankings...](#)

College of Dentistry

Career Advantages

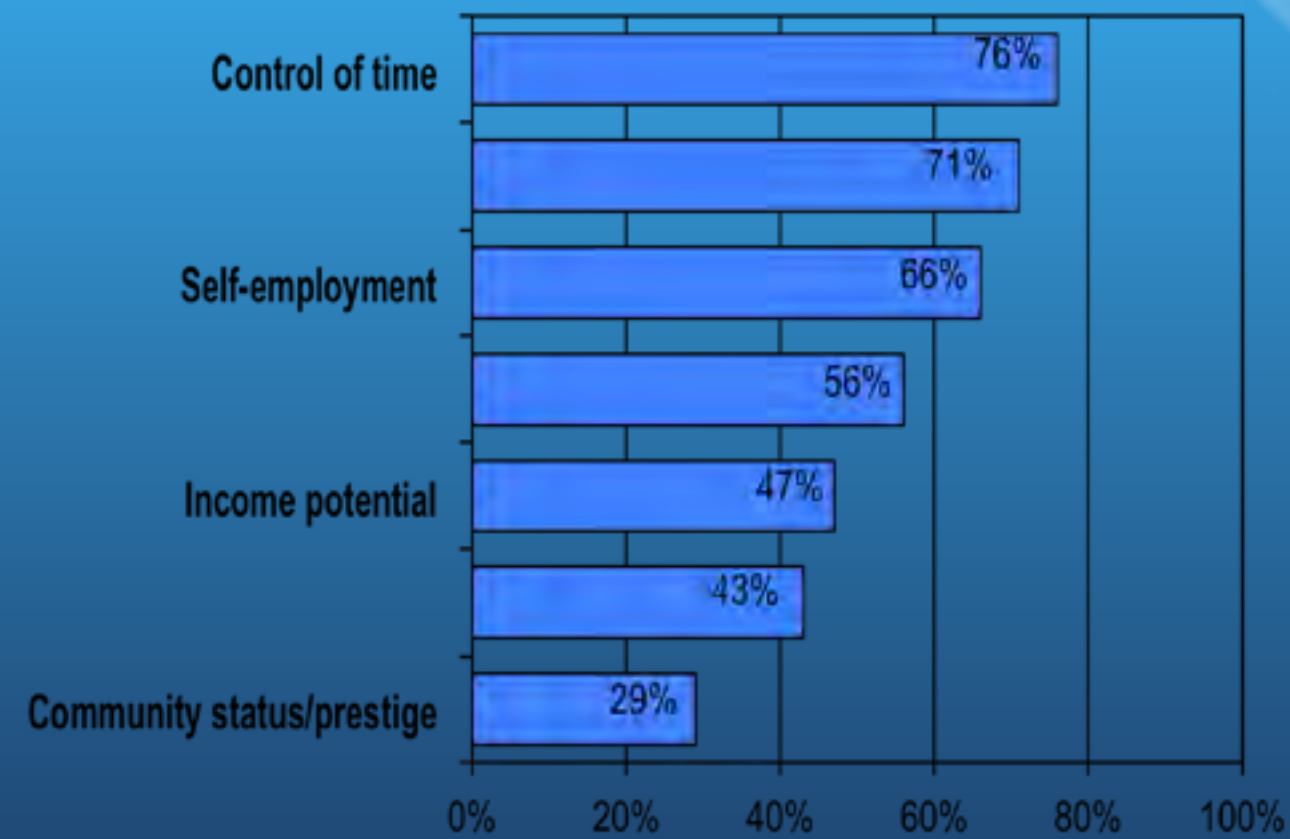
- Personal Satisfaction
- Variety
- Creativity
- Flexibility
- Security

WHAT'S UNIQUE ABOUT DENTISTRY?

- One of ten most trusted and ethical professions in US
- Flexibility - to balance personal and professional life
- Opportunity to be your own boss
- Personally rewarding (earning potential, service to others)
- Combines art and science

College of Dentistry

REASONS STUDENTS CHOOSE DENTISTRY



Source: American Dental Education Association, 2010

PROFESSIONAL OPTIONS IN DENTISTRY and Dental Hygiene

- General Practice (80%)
- Specialization (20%)
- Practice Settings:
 - private offices
 - public health facilities,
 - hospitals
 - military
- Teaching
- Research

College of Dentistry

13

General Dentists

- Has completed a DDS/DMD curriculum (usually 4 years post Bachelor's degree)
- May or may not have completed a 1 or 2 year advanced education program focusing on general dentistry
- May practice all phases / types of dentistry

14

Dental Hygienists

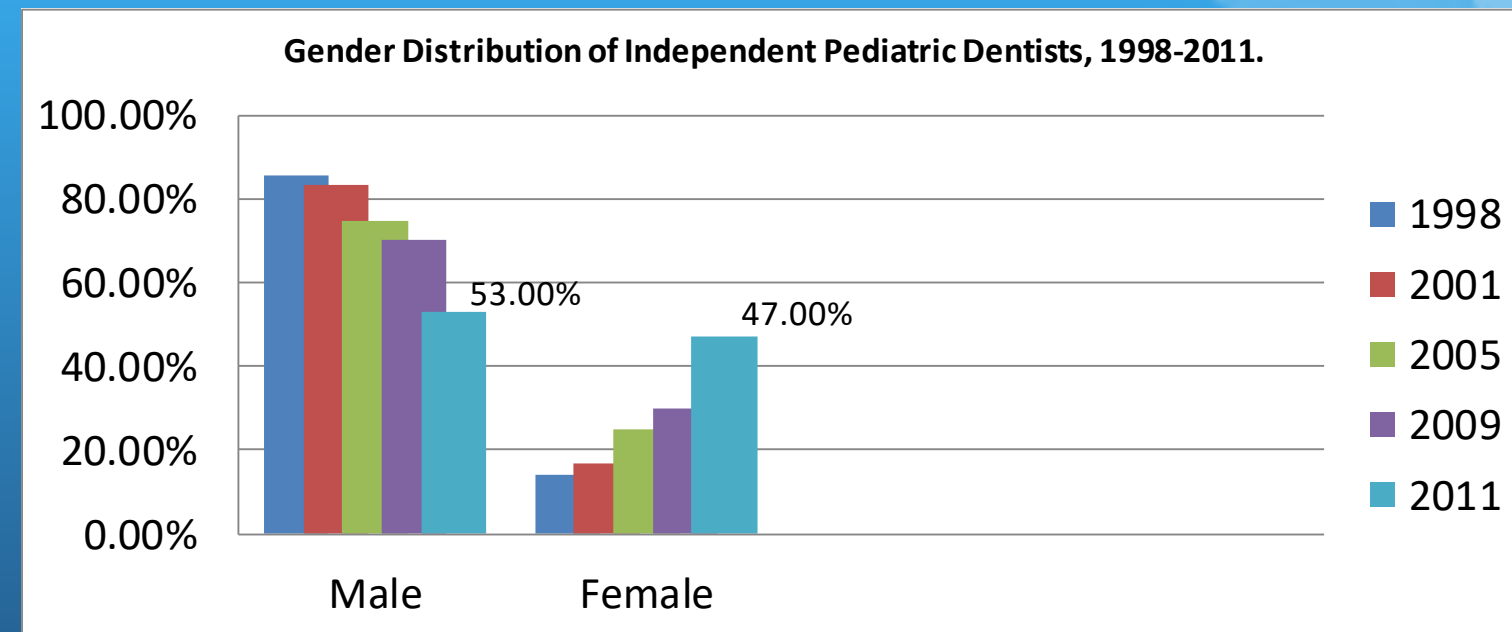
- Some programs have Associates Degree
- Some have Bachelors Degree
- Some hygienists pursue Masters Degree level training (primarily educators)



College of Dentistry

15

GENDER: The percentage of female pediatric dentists has increased from 14.3% to 47% since 1998.



Source: American Academy of Pediatric Dentistry member database 2013

*OUCOD Graduates (as of 2014):
28 Female (47%)
37 Male (53%)
65 have entered into pediatric dentistry*

**APPLYING
FOR
ADMISSION**

College of Dentistry

State of Oklahoma

DDS Programs (1):
University of Oklahoma College of Dentistry

DH Programs (3):
University of Oklahoma College of Dentistry
Rose State College
Tulsa Community College

APPLICATION CYCLE – D.D.S.

- Cycle Opens: June 1
- Application Deadline: October 1
- Interviews: Sept – Nov
- Final Selections: December

College students typically apply at the end of their junior year

College of Dentistry

APPLICATION CHECKLIST

1. Application (ADEA.org)
2. Dental Admission Test (DAT)
3. Recommendations
 - Pre-dental Advisory Committee (two science professors if no committee)
 - Dentist
4. Supplemental Application (OU)
 - Sent directly to OU College of Dentistry

OTHER REQUIREMENTS

1. **Observation/Experience**
 - Self-reported on application
 - 100 hours (minimum)
 - Dental practice, clinic or dental lab
 - Experience is ideal
2. **International Students**
 - TOEFL required 88 minimum ASP 94 minimum
 - Coursework evaluated by World Education Services (WES)

College of Dentistry

PRE-DENTAL REQUIREMENTS

PREREQUISITES

COURSE

SEMESTER HOURS

English	6
Psychology	3
Biology with Lab	16 *
General Chemistry with Lab	8
Organic Chemistry with Lab	8
Physics with Lab	8
Biochemistry	3

CURRENT POOL (8/27/2019)
CLOSES 10/1/2019



- Total Applications: 1064
- Resident: 112

College of Dentistry

ADMISSION BY THE NUMBERS

	2018-19	2017 -18	2016-17	2015-16
• Total Applications	1028	1004	840	761
- OK Residents	129	126	128	114
- Non-Residents	899	878	712	647
• Total Interviews	170		160	184
- Non-Residents	117		70	98
- OK Residents	53		90	86

•TOTAL ADMITS – 2018/19

Non-Residents	5
OK Residents	49

Interview Stats 2018-19

- Ave GPA – 3.62 (3.58-2017)
- Ave Req GPA – 3.52 (3.47-2017)
- OU Ave DAT – 19.96

	QRT	RCT	BIO	GEN	ORG	PAT	SciAve	TotAve
1/17-12/17	18.4	20.4	18.9	19.1	19.2	19.0	18.9	19.2
1/16-12/16	18.0	20.3	18.7	18.9	19.0	18.9	18.7	19.0

College of Dentistry

Interview Stats 2018-19

- Ave GPA - 3.62
 - Ave Sci GPA - 3.47
 - Ave DAT – 19.93
 - Ave Sci DAT - 18
 - Residents 53
 - Non-residents 117
- Female 55 : Male 115
 - AGE: 22.3 (7 over 30)
 - Ethnicity/Race: (Pool):
 - Asian/Pacific Islander - 28
 - American Indian - 11
 - Black or African American – 4
 - Hispanic or Latino - 5
 - White - 106
 - International - 0
 - Two or More - 1
 - Re-applicants – 43
 - 2 second app
 - 7 third app
 - 1 fourth app

What Does it Cost?

COSTS: 2017-18 SCHOOL YEAR*	First Year	Second Year	Third Year	Fourth Year
Tuition, Resident	22,916	22,916	22,916	22,916
Tuition, Non-Resident	54,392	54,392	54,392	54,392
Fees	3,094.65	3,094.65	2,856.65	2,856.65
Instruments, Books & Supplies	14,573	13,293	3,613	4,200
Computer**	2,700			
Estimated living expenses	27,901	27,901	27,901	27,901
Total, Resident	71,184.65	67,204.65	57,286.65	57,873.65
Total, Non-Resident	102,660.65	98,680.65	88,762.65	89,349.65

Costs are subject to change without notice Figures (except tuition) are an approximate breakdown of education expenses

College of Dentistry

OUCOD Website Information

Dental Hygiene Program

<http://dentistry.ouhsc.edu/ProspectiveStudents/ProgramsOffered/DentalHygieneProgram/BaccalaureateProgram.aspx>

Doctor of Dental Surgery Program

<http://dentistry.ouhsc.edu/ProspectiveStudents/ProgramsOffered/GeneralDentistryDDS.aspx>

28

Questions?

College of Dentistry - Dental Hygiene Program

The University of Oklahoma
College of Dentistry
DENTAL HYGIENE PROGRAM



Donna F. Wood, RDH, BSDH, MS
Dental Hygiene Program Director
Associate Professor, College of Dentistry

Dental Hygienist

- Licensed Healthcare Professional
- Focus on preventive, educational, and therapeutic services to promote patients' oral health/total health
- Works closely with the dentist and other healthcare team members to meet oral health needs of patients
- Range of services varies from state to state



College of Dentistry - Dental Hygiene Program

Occupational Outlook

- Employment prospects are expected to remain excellent
- Ever-growing demand for dental care
- 2018 Mean Hourly Wage Nationally was \$36.30
- 2018 Mean Hourly Wage in Oklahoma was \$35.57



U.S Bureau of Labor Statistics

Career Advantages

- Personal Satisfaction
- Variety
- Creativity
- Flexibility
 - *Career - life balance*
- Competitive Salary
- Advanced Degree

College of Dentistry - Dental Hygiene Program

Career Opportunities



- **Clinical Practice**
- **Corporate**
 - Pharmaceutical sales
 - Dental Office Manager
 - Corporate Educator
 - Hospital/Long-Term Care Consultant
- **Education**
 - Classroom/Clinic Instructor
 - Educational Researcher
 - Program Director
 - Dean
- **Public Health**
 - Local/State Dental Public Health Officer
 - Community Clinic Administrator
 - National Health Service Corps



OUHSC OKC
24 students/year



College of Dentistry - Dental Hygiene Program

DISTANCE EDUCATION PROGRAM



ARDMORE: 6 Students Per Year

Distance Sites

WEATHERFORD: 6 Students Per Year



BARTLESVILLE:
10 Students Per Year



College of Dentistry - Dental Hygiene Program

Distance Education

- State-of-the-art laboratories, clinics, classrooms
- Distance faculty have dual appointment.
- OUCOD lectures delivered by interactive videoconferencing.



All Sites have the SAME...

- Entry Requirements
- Application/Selection Process
- Professors
- Educational Standards
- Course Requirements
- Graduation Requirements
- Degree - BSDH



College of Dentistry - Dental Hygiene Program

PROGRAM ENTRY REQUIREMENTS

Requirements

- 2 + 2 Program
 - *Minimum 60 hours, including prerequisite courses*
- Minimum GPA 2.5 (on 4.0 scale)
- ACT or SAT is Required

College of Dentistry - Dental Hygiene Program

Requirements, *cont.*

- Application/Fees (*online*)
- 40 Hours of RDH Observation (*form online*)
- Personal Statement
- Letters of Recommendation (2)

Requirements, *cont.*

- **FOUNDATIONAL COURSES**
 - Must be completed by May, *prior to start of school*
- **PREREQUISITE COURSES**
 - **ALL** prerequisite courses must be completed prior to entering the program

College of Dentistry - Dental Hygiene Program

Foundational Courses

- ❖ Human Physiology
- ❖ Human Anatomy
- ❖ Introduction to Microbiology (with Lab)
- ❖ Introduction to Nutrition
- ❖ Understanding Statistics
- ❖ Principles of English Comp II
- ❖ Elements of Psychology
- ❖ General Chemistry (with Lab)

Timeline

- **Applications – OPEN NOVEMBER 1st**
 - ADEA DHCAS (Primary Application)
 - OUHSC (Required Supplemental Application)
- **Applications – DEADLINE JANUARY 15th**
 - ADEA DHCAS (Primary Application)
 - OUHSC –(Required Supplemental Application)
- Accepted applicants are notified by mid-April

College of Dentistry - Dental Hygiene Program

Selecting Sites for Application

Applicants can apply to one or more sites:

- ARDMORE
- BARTLESVILLE
- OKLAHOMA CITY
- WEATHERFORD



Selection is Competitive

- **Academic Score – Counts as 50%**
 - Total GPA, Science GPA, ACT score and credit for the amount of Foundational Courses completed.
- **Interview Score - Counts as 50%**
 - Total Interview scores from two interviewers

College of Dentistry - Dental Hygiene Program

2019 Admissions Statistics

Total Number of <u>Qualified Applicants</u>	147
Number Accepted	46
Average Cumulative GPA	3.47
Average ACT Score	23
Average Age	22

Qualities for Success



- Academic Success
- Critical Thinking
- Compassion
- Detail-Oriented
- Dexterity
- Physical Stamina
- Interpersonal Skills

College of Dentistry - Dental Hygiene Program

Advisement Information

- Symposium Handout
- Website: *dentistry.ouhsc.edu*

Admission Inquiries

Karen L. Rucker
Dental Hygiene Program
Student Program Coordinator

(405) 271-4435

karen-rucker@ouhsc.edu

College of Medicine - MD Program



ADMISSIONS OFFICE

Sherri Baker, M.D
Associate Professor of Pediatrics
Associate Dean for Admissions

Dotty Shaw Killam
Director of Admissions

Brent Ross
Outreach and Recruitment
Coordinator

College of Medicine - MD Program



Prerequisites



Minimum 90 college hours (verify the following):

Required:

- 1 semester General Zoology/Biology (including lab)
- 2 semesters General Chemistry
- 2 semesters Organic Chemistry
- 2 semesters Physics
- 2 semesters English
- 1 semester Genetics, Cell Biology, or Molecular Biology
- 3 semesters Psychology, Sociology, Philosophy, or Humanities

Recommended:

Biochemistry and a writing-intensive English Course



Requirements



- U.S. citizen or hold a permanent visa
- GPA average of 3.0 or better
- Letter grade of C or better required in prerequisite courses
- We will accept Pass/Fail grading, advanced placement, & CLEP courses if a higher course is taken for a grade
- Medical College Admission Test (MCAT) score of 492 or better

College of Medicine - MD Program



Application Timeline



Junior Year	Jan-July	Medical College Admission Test (MCAT)
	May	Begin American Medical College Application Service (AMCAS)
	October 15	AMCAS Deadline (4-6 weeks to process)
Senior Year	October	Interviews Begin (Completed applications)
	November 1	Supplemental Deadline
	November	Interviews
	January	Interviews & Final Adm Board Meeting
	August	Class Begins



Suggested Timeline



- Have AMCAS submitted by August 15
- Supplemental will follow and should be completed by Sept 1
- This allows you to be considered for Oct interviews
 - We notify applicants of interview offer ~ 1 month ahead so travel arrangements, etc can be made

College of Medicine - MD Program



First Monday Advisement

First Mondays – AM or PM sessions open to anyone interested in medicine and are posted on our website and Facebook. RSVP to AdminMed@ouhsc.edu.



General Recommendations

- Join the Pre-Med/Pre-Health Club
- Select a Major of Interest
- Prioritize Academics
- Gain Health Care Experience
- Volunteer Time
- Become Involved on Campus

College of Medicine - MD Program



The Interview

- We hold 10 interview days and interview ~30 applicants each day. One day in Tulsa
- Interviews are held October through January.
- The interview is one hour long and is “semi-blind” with structured questions
- The interview is a 3 on 1 interview style. A typical team consists of one faculty physician, one community physician, and one 4th year medical student.



Applicant Pool - Class of 2023

UNIVERSITY OF OKLAHOMA

Categories	Total	GPA	MCAT	BCPM	CS
Residents	425	3.68	504.18	3.59	76.79
Nonresidents	2276	3.52	502.71	3.39	73.24
Male	1381	3.54	504.37	3.44	75.20
Female	1314	3.55	501.42	3.41	72.36
Declined to answer	6	3.59	508.00	3.49	80.64
Total	2701				

College of Medicine - MD Program



Interviewed Pool - Class of 2023

Categories	Total	GPA	MCAT	BCPM	CS
Residents	274	3.77	508.00	3.70	82.57
Nonresidents	32	3.85	516.44	3.81	91.79
Male	170	3.75	509.14	3.70	83.66
Female	135	3.81	508.61	3.74	83.45
Declined to Answer	1	3.58	503.00	3.45	75.25
Total	306				



Class of 2023

Categories	Total	GPA	MCAT	BCPM	CS
Residents	154	3.79	508.75	3.72	83.48
Nonresidents	11	3.77	514.91	3.70	89.43
Male	90	3.76	509.80	3.69	84.32
Female	75	3.83	508.40	3.76	83.34
Total	165	3.79	509.16	3.72	83.88

UNIVERSITY OF OKLAHOMA

College of Medicine - MD Program



MCAT Resources



www.aamc.org/students/applying/mcat

The AAMC website includes the following MCAT information:

- Link to register for the Exam
- Official Guidebook for the MCAT
- Practice tests and study plans
- Updated information on the MCAT Exam



Majors in Class of 2023



Aerospace Engineering	Biochemistry	Biology	Biomedical Engineering	Chemistry
Economics	Exercise and Sports Science	Geophysics	History	International Studies
Mathematics	Mechanical Engineering	Microbiology	Nutrition	Philosophy
Physiology	Political Science	Psychology	Religious Studies	Zoology

College of Medicine - MD Program

Schools Represented in Class of 2023

American Military University
Baylor University
Brigham Young University
California State University-Long Beach
Carthage College
Case Western University
Clemson University
College of the Holy Cross
College of William and Mary
Duke University
East Central University
Emory University
Emory University
Hendrix College
Lewis and Clark College
Lindenwood University
Newman University
Northeastern State University
Northwestern University-Evanston
Oklahoma Baptist University
Oklahoma Christian University
Oklahoma City University
Oklahoma State University
Oral Roberts University

Pepperdine University
Pittsburg State University
Saint Louis University
Southern Nazarene University
Southwestern OK State University
Texas Christian University
Texas Tech University
United States Military Academy
University of Arkansas
University of Central Oklahoma
University of Colorado
University of Kansas
University of North Carolina
University of Northern Iowa
University of Oklahoma
University of Rochester
University of San Diego
University of Science and Arts of Oklahoma
University of South Carolina
University of Texas at Dallas
University of Tulsa
Wartburg College
Washington University in St. Louis

What's Continuing

School of Community Medicine-

A full 4 year track!

We will do one full interview day in Tulsa on Nov 25th

Structured Interview Questions

Applicant should think about past examples of behavior that show readiness for medical training.

Consider reviewing AAMC Core Competencies for Entering Medical Students

MCAT

<https://www.aamc.org/students/advisors/mcat-advisors/>

College of Medicine - MD Program



AAMC Core Competencies for Entering Medical Students

Interpersonal Competencies

Service Orientation
Cultural Competence
Teamwork
Oral Communication
Social and Interpersonal Skills

Intrapersonal Competencies

Ethical Responsibility to Self and Others
Reliability and Dependability
Resilience and Adaptability
Capacity for Improvement

Koenig TW et al: Core personal competencies important to entering medical students in medical school: what are they and how could they be assessed early in the admissions process. Academic Medicine 88:603-613 (2013)

AAMC Admissions Initiative <https://www.aamc.org/initiatives/admissionsinitiative/competencies/>



Contact Information

College of Medicine – Admissions

PO Box 26901, BSEB 241
Oklahoma City, OK 73126

Phone: (405) 271-2331
Fax: (405) 271-8810

Web: <http://www.oumedicine.com/collegeofmedicine>

E-Mail: AdminMed@ouhsc.edu

MD/PhD Program



M.D./Ph.D. Program

The University of Oklahoma
HEALTH SCIENCES CENTER

In cooperation with

 **OMRF**

Oklahoma Medical Research Foundation



Presbyterian
Health
Foundation

The MD/PhD Program is made possible by a generous grant from the Presbyterian Health Foundation.



M.D./Ph.D. Program



Students obtain an intensive medical education coupled to rigorous training in scientific investigation. Graduates are prepared for careers in academic medicine that combine patient care, teaching, and patient-oriented or laboratory research.

MD/PhD Program



M.D./Ph.D. Program

Summer 1	10-week lab rotation
Year 1	Med School I - Basic Sciences
Summer 2	10-week lab rotation
Year 2	Med School II – Basic Sciences (USMLE 1)
Summer 3	Begin graduate courses and research
Years 3 – 6	Graduate School (Courses, Research, Dissertation, Defense)
Year 7	Med School III – Clinical Sciences
Year 8	Med School IV – Clinical Sciences (USMLE 2 & Residency Match)



M.D./Ph.D. Program

Ph.D. Programs



- Biochemistry & Molecular Biology
- Cell Biology
- Microbiology & Immunology
- Neuroscience
- Pathology
- Physiology

MD/PhD Program



M.D./Ph.D. Program

MD/PhD Admission Requirements

- Admitted into the College of Medicine.
- Minimum 2 summers or 1 year research experience.
- Earned Baccalaureate degree from an accredited university or college.
- Submitted 3 letters of recommendation from faculty addressing research experience & skills. These letters are in addition to the recommendation letters required of the College of Medicine (Due Oct. 1).
- Completed OUHSC M.D./Ph.D. Program Application (Due Oct. 1).



M.D./Ph.D. Program



Financial Support

- Stipend \$30,000/year (2019-2020)
- Full tuition throughout training

MD/PhD Program



COM & MD/PhD

College of Medicine - Admissions

PO Box 26901, BMSB 357

Oklahoma City, OK 73190

Phone: (405) 271-2265

Web: <http://www.medicine.ouhsc.edu/admissions/>

E-Mail: AdminMed@ouhsc.edu

MD/PhD Program

PO Box 26901, BMSB 357

Oklahoma City, OK 73190

Phone: (405) 271-2503

Web: w3.ouhsc.edu/mdphd/

E-Mail: ann-olson@ouhsc.edu

OU/Tulsa School of Community Medicine



What is the OU-TU SCM?

- Physician Assistant Program
- 4 Year, MD Track
- Focus on Social Determinants of Health
- Lifestyle Medicine-New option for certification!
- Population Health
- Interprofessional Learning
- Underserved Communities
- Public Health

OU/Tulsa School of Community Medicine



PHYSICIAN ASSISTANT PROGRAM

ou.edu/communitymedicine.com



PHYSICIAN ASSISTANT PROGRAM

- Separate accreditation from OKC program.
- 24 Students per class
- Rotations side by side with MD Students
- Longitudinal Clinic Experience (PAL Clinic)
- 100% pass rate since program inception

OU/Tulsa School of Community Medicine

Prerequisites for Tulsa PA Program

- **English Comp I & 2** – 6 hours
- **College Algebra**- 3 hours (higher math class may be accepted)
- **Psychology**- 6 hours (*Recommended: Introduction to Psychology, Abnormal Psychology, and Developmental Psychology*)
- **Chemistry**- 12 hours (*General Chemistry or above with lab as required for science majors. Three hours must be Organic Chemistry or Biochemistry.*) *Must have labs!*
- **Microbiology with lab**- 4 hours

The following must be completed within the last 7 years- **No Exceptions!**

- **Physiology**- 4 hours (with lab)
- **Anatomy**- 4 hours (with lab)
- **Upper division science** (*Must be 3000 or 4000 level. Examples: Genetics, Immunology, Virology, Cell Biology, Molecular Biology, Embryology, Histology, Pathogenic Microbiology.*)

All prerequisites must be completed with a grade of “C” or better

Requirements for Tulsa PA Program

- A Bachelor’s degree
- Minimum overall and Science GPA of 3.0
 - We look at Total GPA, Science GPA, & Last 60 hrs GPA
- Completed GRE Results (GRE code 6902) Results must be at program by application deadline (October 1st)
- Beginning with the 2016-2017 application cycle, applicants must be a US citizen or permanent resident.
- Health Care Experience is required, but no certain number of hours.

OU/Tulsa School of Community Medicine

Admissions 2018-2019 Tulsa PA Program

- Received 708 applications
- Interviewed 100
- Accepted 24
- Accepted 5 Re-applicants
- Current Cycle Closes October 1st

ou.edu/communitymedicine.com

Tulsa PA Class Statistics Over 7 years

Class	Cum. GPA	Science GPA	Last 60 hrs. GPA	Science Hours	GRE Percentile
2021	3.75	3.66	3.78	67	62 nd
2020	3.68	3.61	3.70	72	60 th
2019	3.79	3.79	3.88	72	55 th
2018	3.70	3.67	3.79	76	56 th
2017	3.71	3.64	3.74	66	57 th
2016	3.81	3.77	3.84	55	60 th
2015	3.80	3.70	3.80	54	58 th
2015-2021 Average	3.75	3.69	3.79	66	58 th

ou.edu/communitymedicine.com

OU/Tulsa School of Community Medicine



MEDICAL DOCTOR
PROGRAM-SCM TRACK

ou.edu/communitymedicine.com



- Full 4 year track available in Tulsa.
- 30 students each year.
- Utilizes distance education technology for didactic lectures
- Utilizes community based clinical settings
- Bedlam clinic experience
- Additional Competency in Community Medicine and Lifestyle Medicine
- Tulsa students can take a year to earn their MPH – paid for by GKFF
- Summer Internship program for undergraduates and first year medical students

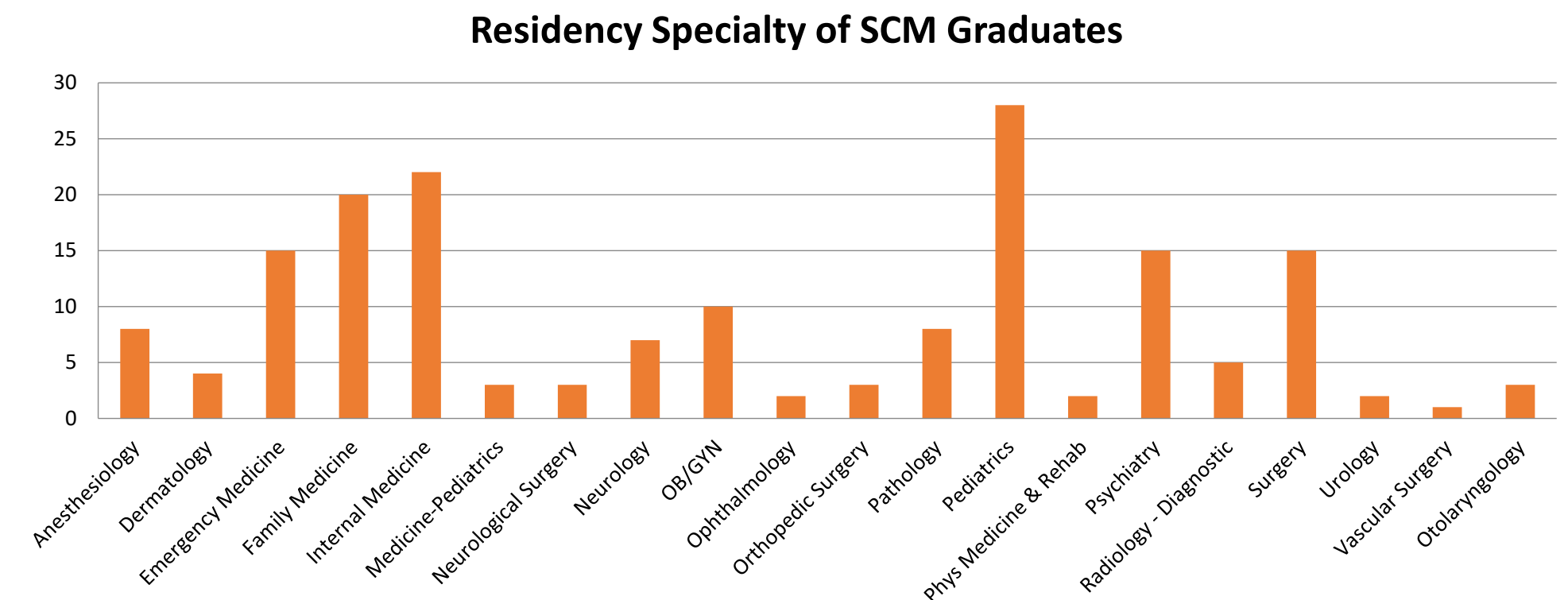
OU/Tulsa School of Community Medicine



- Applicants use same process for applying to OU SCM as OU COM with additional section on supplemental application.
- Please see information from the OU College of Medicine for admissions requirements
- Students will complete a second interview for the School of Community Medicine
- Interviews can be done on same day or different day as their OU COM Interview.
- One full admissions interview will take place in Tulsa on November 15th



- Our students match into both Primary Care and Specialty residency programs
 - Primary Care – 83 students
 - Specialty Care – 90 students

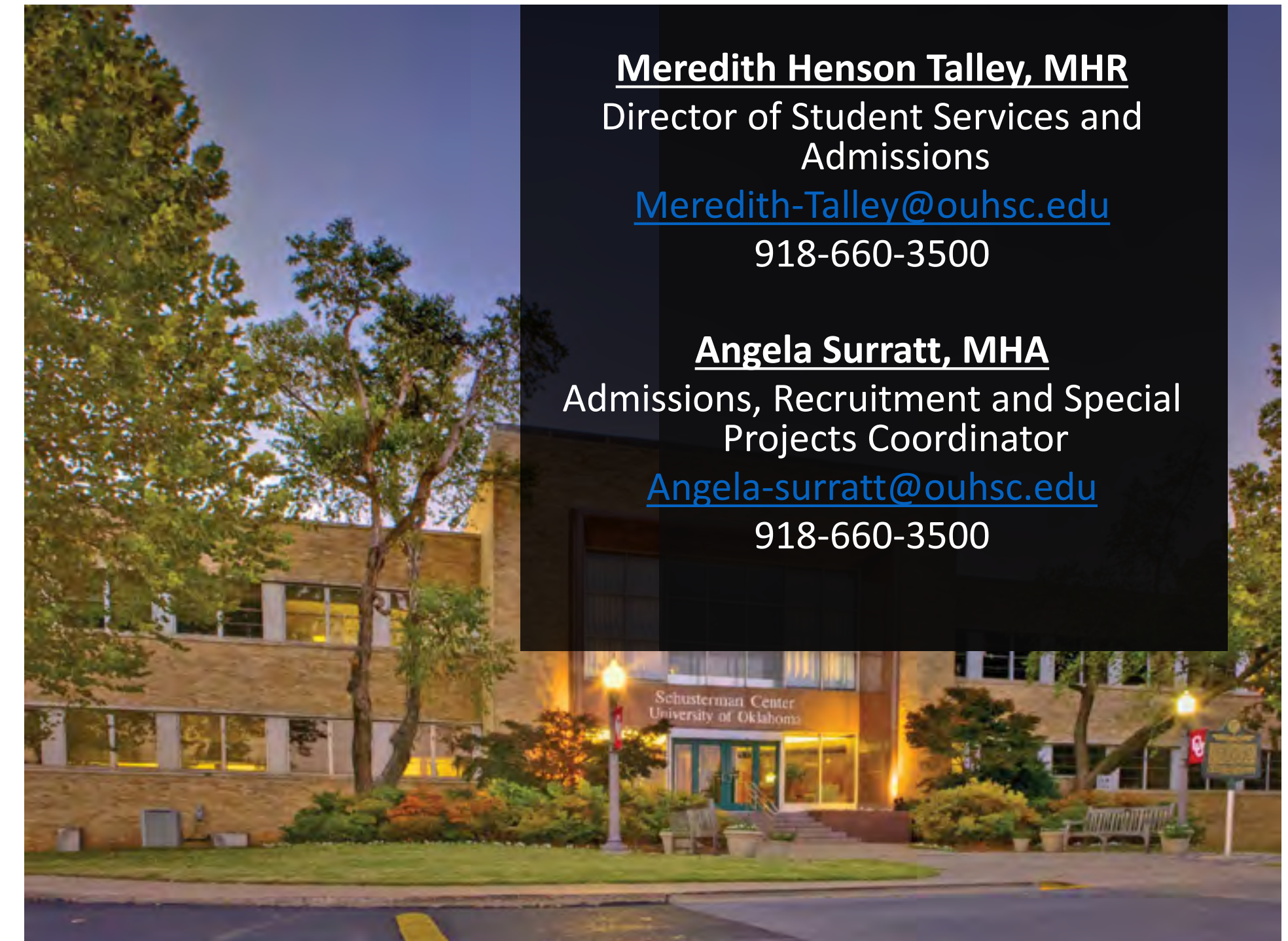


OU/Tulsa School of Community Medicine

Successful Applicants/Students

- Are already successful. Good grades, MCAT, GRE, etc.. These are a must to get the interview.
- Are prepared for the interview.
- Have high quality health care experience (especially for PA school).
- Have a decent grasp of the mission of SCM
- Show a commitment to Community Medicine through their experiences, essays, and interview.

ou.edu/communitymedicine.com



OU/Tulsa School of Community Medicine

THANK YOU



School of
COMMUNITY
MEDICINE

ou.edu/communitymedicine.com